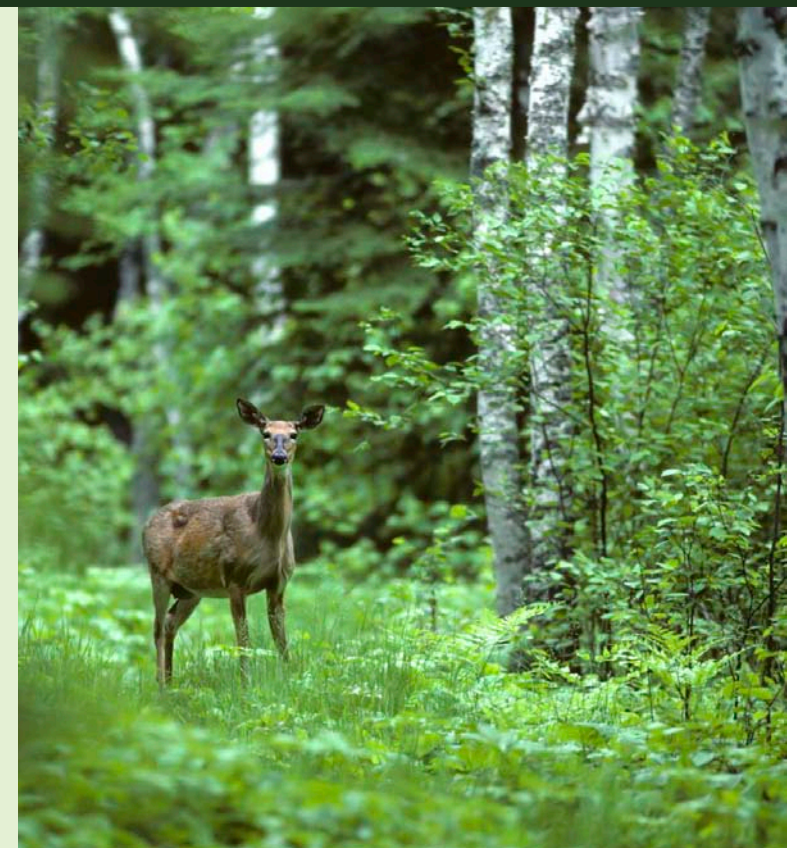




SOUTHERN REGIONAL EXTENSION FORESTRY

TABLE OF CONTENTS

2 ::	Letter from the Southern Regional Extension Forester
4 ::	2006 Regional Review
8 ::	Overview of SREF
10 ::	Meet the SREF Team
12 ::	Programs and Initiatives <ul style="list-style-type: none">• Sustainable Forestry• Communications• Posters & Brochures
18 ::	Products and Technology <ul style="list-style-type: none">• Internet Applications• Digital Media• Committees & Special Assignments• Papers, Reports, Presentations• Publications & Posters
29 ::	The Road Ahead : SREF 2007



A LETTER FROM THE SOUTHERN REGIONAL EXTENSION FORESTER



front row: Sarah Ashton, Candee Golden, Amanda Adams, Elizabeth Jahn
back row: Allison Ginn, William G. Hubbard, Matthew Howell, Cole Sherer

COLLABORATION IN ACTION:

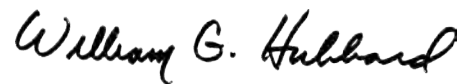
As we begin production of this year's annual report, I can't help but think of how all of the projects we are working on today involve a collaborative approach. While each one is distinct and separate and designed with different goals and objectives, they all are the result of professionals working across agency, state and discipline lines. I've particularly enjoyed the new and continuing working relationships I've been fortunate enough to have had during 2006. These include our current staff, new employees we've brought on board and those that have moved on to different venues. In particular, I'd like to thank Bryan Jordin and Allyson Lawrence for their years of service to the Southern Regional Extension Forestry office. Bryan accepted a job with Georgia Tech during the summer, and Allyson accepted a job with a new member of her family! We're indebted to both of them for their hard work and dedication. Holding the fort down through all the changes has been Matt Howell who has been a stalwart in our technology department. Candee Golden, Sarah Ashton and Cole Sherer joined the team this

year and are Administrative Assistant, Educational Program Specialist and Internet Technology Specialist respectively. I can honestly say that this is the best team ever assembled here to serve the region.

In addition to a great team here at the regional office, there are professionals all over the region who have taken a proactive approach to education and technology transfer. From the biomass training initiative to the 2006 version of the Master Tree Farmer program, we have a fantastic forestry education community. Partners such as the USDA FS State and Private Forestry and the Southern Research Station have come to the table to work with us on education and technology transfer opportunities vital to accomplishing their mission. The Forest Landowners Association, the USDA CSREES, ASRED, Extension natural resource specialists, the Southern Group of State Foresters and many others all work together to make things possible for us to do the work we do. We in the regional office of the Southern Regional Extension Forester are grateful for your support.

In closing, 2006 was a productive year for the staff of the Southern Regional Extension Forestry office. The breadth and depth of work we are involved in is seen on a daily basis as we often have several projects ongoing at any one time. As you read the 2006 Annual Report and 2007 Plan of Work, you'll hopefully get a better idea of what we are trying to accomplish here at SREF. The challenges are great and the resources are generally limited but if we can do anything to help you achieve your objectives, please don't hesitate to contact us.

Sincerely,



William G. Hubbard

Southern Regional Extension Forester

A very special thank you to Liz Jahn, Sarah Ashton and Cassie Hester for their work on this year's annual report. It looks outstanding!

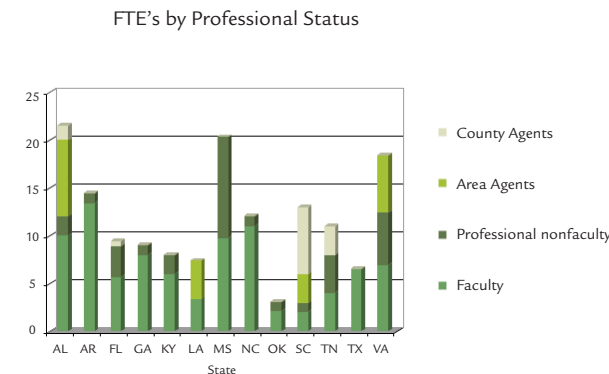
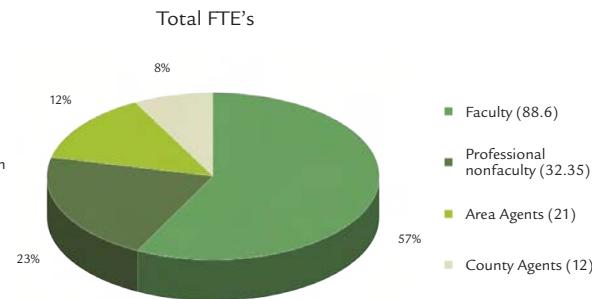
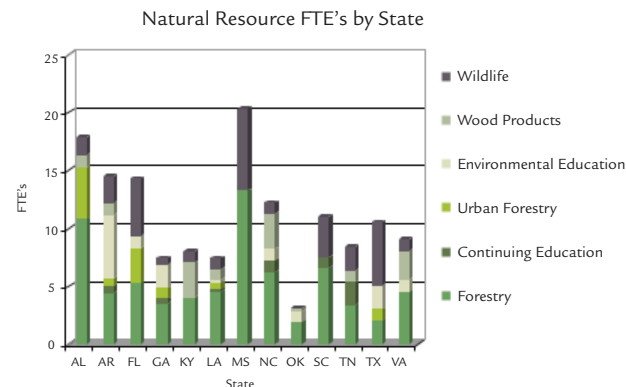
2006 REGIONAL REVIEW

The forests and waters of the Southern United States remain as biologically diverse and productive as any other region in the world. Members of the forestry and natural resources community have been aware of this fact for decades. Recent land use and land changes however are beginning to place pressures on many parts of the South. As the recent Southern Forest Resource Assessment highlights, the greatest threat in the South right now is urbanization and fragmentation. Finding a common ground between growth, development and natural resource sustainability is quickly becoming the mantra of many in the natural resources education community.



The Southern Regional Extension Forestry office continues to use its capacities and resources to meet the needs of a diversifying and growing audience. Several projects are ongoing from previous years, while others were initiated in 2006. These projects and initiatives have taken on a variety of purposes, based on the issue, need or opportunity at hand. The SREF office accomplished a great deal in 2006 due to the strategic deployment of resources. These include hiring and replacing staff, developing new technology tools, assisting state Extension units with their mission and objectives, networking with numerous partners and marketing/promoting our products. Several of these projects are highlighted here in the regional review section while others are explained in detail in subsequent sections.

SREF undertook regional coordination of the Master Tree Farmer (MTF) program in the first few months of the year. This program, a seven-week landowner-oriented shortcourse was the advanced course. Over 504 people participated from sites in seven states. Evaluation of the program was once again



very positive. Following this event, several key partners were surveyed to get an idea of future events including shorter, more topical area programs. The decision to develop a shorter “mini-series” program was decided upon for 2007 (see Plan of Work for more details).

In addition to the MTF program planning, work continued on the biomass training and education initiative. Funded by the DOE and USDA, this initiative involves several partners including the SREF office. Tasks included development of internet applications including the Encyclopedia of Southern Bioenergy, a volume of the Forest Encyclopedia Network. In addition, the SREF office assisted the project leadership by introducing the land-grant and general forestry community to the project. In particular this meant ensuring that state Extension foresters and others were familiar with the project, were involved in any review of materials, and had an idea of how the resources were to

be used once developed. Ultimately, the project’s goal is to develop an online resource (the encyclopedia) that serves as core material to develop fact sheets, online learning activities, PowerPoint® presentations and other outreach products.

In 2006, Sarah Ashton, a Virginia Tech forestry graduate replaced Daniel Cassidy on the project. Sarah’s major responsibilities include oversight of many components of the training package. 2006 accomplishments included completion of the Encyclopedia of Southern Bioenergy, drafts of fact sheets and PowerPoint® presentations, and development of a forest bioenergy web portal. These resources can be accessed via the following website: <http://www.forestbioenergy.org>.

Other regional initiatives included working with federal, state and private organizations to develop and promote the Southern Fire Portal. This portal is designed to

bring fire-related information and technology “to your fingertips.” The portal contains publications, datasets and databases, decision-support tools, fire-related models, glossaries and thesauri, literature syntheses, events and conferences, online communities of interest, references to print materials, CD’s, DVD’s and a whole lot more. The website can be accessed via <http://frames.nbii.gov/southernfire>.

On the conference and professional development front, the SREF office led or provided assistance with several events in 2006 including the Southern Forestry GIS conference (or SoForGIS), the Southern Conference on Extension and Technology Transfer in Natural Resources, the Changing Roles: Wildland-Urban Interface Professional Development Train-the-Trainer workshop, the National Association of Natural Resource Extension Professionals Conference and the Southern Extension Forestry Unit Leaders meeting.

Another regional initiative that began in 2005 but elevated to new levels in 2006 is joint work with the USDA Forest Service State and Private Forestry on a landowner education strategy. This involves placing more emphasis on the programs and materials that have the greatest impact for forest landowners. Included in this is the promotion of materials such as the Forest*A*Syst introductory CD (and ultimate website), the Woodland Owners Reference Manual, the Forests of the South, and the Master Tree Farmer program. Each of these resources is valuable depending on the depth of landowner understanding and interest. While all of these materials are currently available, it is the joint marketing and accessibility of these resources that the USDA FS and SREF will be working on in 2007.

A final initiative of note is the recent tripartite agreement between the USDA Forest Service State and Private Forestry, the USDA Forest Service Southern Research Station, and the Southern Regional Extension Forestry office (inclusive of the 13 Southern Extension Forestry Units). This agreement was signed to increase cooperation and collaboration in the area of science delivery and science application. Several objectives are set forth in the agreement including joint conferences, technology transfer efforts and an advisory council.

Time and space limit discussion and description of everything we are involved in here at the regional office. For more information, please visit the Southern Regional Extension Forestry homepage at <http://www.sref.info>.

STATE UPDATES

The thirteen Southern 1862 Land-Grant Universities continued service to various clients through state-level Cooperative Extension and Agricultural Extension Services in 2006. Natural Resource Extension Specialists and Agents provided educational programming to forest owners, farmers, youth, urban audiences, wood-using industries, conservation organizations, communities and a host of other audiences. Highlights include:

ALABAMA: Sonya Wood-Mahler, Alabama Extension Agent, won the “Governor’s Conservation Award” in 2006 for “Natural Resources Educator of the Year.” This is a prestigious state-wide competition administered by the Alabama Wildlife Federation.

ARKANSAS: In 2006, over 1,090 landowners enrolled in the Arkansas Acres for Wildlife program representing over 1.25 millions acres. Of these participants, 897 implemented habitat management practices as a result of their participation in the program.

FLORIDA: Florida developed training materials for natural resource professionals faced with the changing landscape of the growing wildland-urban interface (WUI) and held workshops to educate Extension and state agency leaders how to advise landowners and community leaders regarding these issues.

A TV program was produced on “Conservation Easements” to air throughout the Southeast and nationally through the National Telecommunications Association in 2007.

GEORGIA: The Mary Kahrs Warnell Forest Education Center provided school-aged students and teachers with educational programs about sustainable forest management practices and forest ecosystems. The Center reaches more than 5,000 adults and children annually.

A series of workshops for community foresters and professional arborists were developed to help them understand the intricacies of tree geometry and biomechanics and the power of storms on trees.

KENTUCKY: The Kentucky Woodland Magazine was initiated. The magazine is a joint project between the University of Kentucky's Department of Forestry Extension Program and the Kentucky Division of Forestry and is focused on providing information and solutions for improving the states non-industrial private woodlands.

In 2007, landowners will be given the opportunity to attend three Kentucky Woodland Owner Short Courses, a series of four field days with separate program emphasis for each day.

LOUISIANA: In 2006, the Extension Natural Resources Program (ENR) developed and implemented approximately 25 unique programs that were delivered to various clientele, including landowners, professional natural resource managers, loggers, arborists, the general public, wood utilizing companies and sole proprietorships, and nature enthusiasts.

MISSISSIPPI: Forest and Wildlife Management for Recreation and Profit, an interactive video short course, was offered in 16 counties. 222 participants owning 48,778 acres were in attendance.

Approximately 115,000 mail-outs were sent to increase awareness of the importance of forest resources and related issues to a statewide audience of Non-industrial Private Forest Landowners.

NORTH CAROLINA: The "2006 Hispanic Farm Safety Day" training held in Spanish provided information to 175 Hispanic workers, farm owners and contractors, with a large emphasis on Pesticide safety. This program gained state and national attention as a great success in the NCFB Magazine, the NCCTA magazine, the NCTA magazine, the Cultivator newsletter and local newspapers.

OKLAHOMA: The Pushmataha Forest Habitat Demonstration Area was used to educate landowners, students, and natural resource professionals about integrated forest, livestock and wildlife management.

Forestry on the Grow Forest Utilization Conference provided sessions with topics of interest to forest landowners, loggers, primary processors, secondary manufacturers, and service providers.

TENNESSEE: Five new counties were added to the County Forestry Associations bringing the state total to 44 counties, representing 1,800 landowners and 276,000 acres.

The Tennessee Healthy Hardwood initiative was launched with a goal of demonstrating forest management practices on state forest land.

TEXAS: Wildlife and fisheries management workshops targeting absentee landowners were conducted in 6 major urban areas – Dallas, Ft. Worth, Austin, Amarillo, Houston and San Antonio. A total of 292 landowners controlling 196,186 acres participated.

The Award-winning Texas Master Naturalist program has trained over 3,000 master volunteers, annually providing over 100,000 volunteer hours and reaching over 250,000 citizens with natural resource programming.

VIRGINIA: BMP & Water Quality Workshops were conducted to better educate loggers on the proper use of BMPs to protect water quality.

The Virginia Master Naturalist Program was launched in 2006 to develop a corps of well-informed volunteers to provide education, outreach, and service dedicated to the beneficial management of natural resources and natural areas.



OVERVIEW OF SREF

The office of the Southern Regional Extension Forester is unique in its role and position among the numerous organizations that play a part in stewarding our nation's natural resources. We pride ourselves in serving state extension forestry and natural resources professionals and other key partners to further forest stewardship in the South with innovative information, tools, and programs to meet the numerous challenges they face.

MISSION

To assist professionals in the South who work on issues related to natural resources, especially state Extension forestry and natural resource professionals, with information and tools that facilitate efficient use of their time and resources.

HISTORY

The position of Southern Regional Extension Forester was created in 1979 to serve as a liaison between the USDA Forest Service and thirteen 1862 Extension forest resource programs in the South. Formally established with a memorandum of understanding (MOU) between the thirteen southern land-grant universities and the USDA Forest Service, this document was updated in 2000 and serves as the benchmark for judging the performance and effectiveness of the position. The MOU established that the position would be located in Athens, Georgia with secondary office space provided by the USDA Forest Service in Atlanta as needed. The Extension Service Director at the University of Georgia provides immediate supervision for the position and a regional oversight committee representative of critical partners provides input through an annual review.

Since 1979 the duties of the Regional Extension Forester have evolved to include a regional programming, representation, promotion and communication role within the forestry and natural resource communities regionally and nationally.

The following are the current institutions served by the Southern Regional Extension Forester:

Auburn University — Alabama Cooperative Extension System — <http://www.sfw.s.auburn.edu/extension/>

University of Arkansas — Arkansas Cooperative Extension Service — <http://www.arnatural.org/>

University of Florida — Florida Cooperative Extension Service — <http://www.sfrc.ufl.edu/Extension/ExtInfo.html>

The University of Georgia — Georgia Cooperative Extension Service — <http://www.forestry.uga.edu/>

University of Kentucky — Kentucky Cooperative Extension Service — <http://www.uky.edu/Ag/Forestry/extension/>

Louisiana State University — Louisiana Cooperative Extension Service — <http://www.agctr.lsu.edu/>

Mississippi State University — Mississippi Cooperative Extension Service — <http://www.cfr.msstate.edu/cfr/html/extension.htm>

North Carolina State University — North Carolina Cooperative Extension Service — <http://www.ces.ncsu.edu/nreos/forest/>

Oklahoma State University — Oklahoma Cooperative Extension Service — <http://agweb.okstate.edu/fwa/>

Clemson University — Clemson Cooperative Extension Service — <http://www.clemson.edu/extfor/>

The University of Tennessee — University of Tennessee Extension — <http://fwf.ag.utk.edu/extension/extension.htm>

Texas A&M University — Texas Cooperative Extension — <http://extensionforestry.tamu.edu/>

Virginia Tech — Virginia Cooperative Extension — <http://www.ext.vt.edu/>

USDA Forest Service — Southern Region State and Private Forestry — <http://www.fs.fed.us/>

GRANTS & CONTRACTS

The activities and projects of the Southern Regional Extension Forestry office are supported from a number of different sources including base funds provided by the Southern Extension Directors and the USDA Forest Service. In addition, grants and contracts from

other sources are utilized for various projects that fall under the various mission areas of the Extension Service including technology transfer, information dissemination, science application and other areas. The table to the right summarizes current and ongoing grants and contracts of the Southern Regional Extension Forestry office.

2006 NEW FUNDING

AMOUNT OF \$ RECEIVED	NAME OF PROJECT	LENGTH OF PROJECT
\$285,780.00	The Southern Pine Beetle Hypertext Encyclopedia Project	24 months
\$150,788.00	SREF Annual Operating Grant	12 months
\$50,000.00	RNGR Information Technology Project	12 months
\$21,000.00	Urban Forestry Southeast Website Enhancements & Support - Phase II	18 months
\$40,000.00	USDA Travel & Support	12 months
\$30,286.00	Caring for Deer & Forests	9 months

Total New 2006 Funding: \$577,854.00

Continuing funding: \$496,944.04

Total Funding since 2006: \$1,074,798.04

MEET THE SREF TEAM



Over the years, SREF has expanded to include a diverse group of hard working individuals who assist the Southern Regional Extension Forester in executing his duties.



William G. Hubbard ::

SOUTHERN REGIONAL EXTENSION FORESTER

Bill has served as the Southern Regional Extension Forester since 1993. His position serves to facilitate regional education, extension, and technology transfer programs among thirteen southern land-grant universities, the USDA Forest Service, state forestry agencies, and others within the southern forestry community. Bill received his forestry training at the University of Florida. Before becoming Southern Regional Extension Forester, Bill taught forest management and economics at the University of Florida for five years while also managing the Florida Forest Stewardship and Urban Forestry Extension programs at UF.

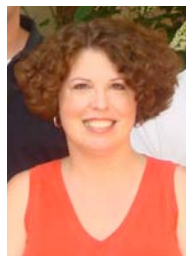


Matthew Howell ::

INFORMATION TECHNOLOGY PROJECT MANAGER

Matt has worked with SREF since early 2004 after completing a Bachelors of Science degree in Computer Science from the

University of Georgia. Matt became the IT Project Manager in 2006 after working previously as an IT associate. Matt provides oversight for SREF's many technology efforts. Matt is currently pursuing a Masters of Science in Computer Science from the University of Georgia. He expects to graduate in 2034.



Candee Golden ::

ADMINISTRATIVE SPECIALIST

Candee joined the SREF staff in April 2006 as an Administrative Specialist. She has worked for the University of Georgia for 4 years. Candee's varied background

includes work in accounting and purchasing in the restaurant industry, co-owning a contracting business, and being a full-time mom.



Sarah Ashton ::

PROGRAM COORDINATOR

Sarah joined the SREF staff during the summer of 2006 after completing a Masters of Science in Forestry at Virginia Polytechnic Institute and State University.

Currently, Sarah is involved in the wrap-up phase of a three-year Southern Forest Research Partnership biomass training initiative. Sarah also assists the Southern Regional Extension Forester with his day-to-day activities. Before joining SREF, Sarah completed a year with Americorps where she participated in Chesapeake Bay conservation and restoration work. Additionally, she spent a year managing volunteers with the Appalachian Trail Conservancy. Sarah loves forestry, but would some day love to diversify her skills by managing and owning a goat farm.

STUDENT ASSISTANTS



Elizabeth Jahn ::

GRAPHIC DESIGNER

Liz joined the SREF staff in May 2005 as a graphic designer. She provides design services that support multiple projects. She graduated in December of 2006 with a Bachelors of Fine Arts in Graphic Design and plans to stay with SREF in the new year.



David Koon ::

GRAPHIC DESIGN INTERN

David recently joined the SREF team to assist Liz in multiple projects. He plans to graduate in 2007 with a Bachelor of Fine Arts in Graphic Design from the University of Georgia.



Cole Sherer ::

IT PROFESSIONAL ASSOCIATE

Cole joined SREF in June 2006 and assists Matt in developing websites for multiple projects. He is currently pursuing his BS in Computer Science, and hopes to graduate in May 2007.



Amanda Adams ::

STUDENT ASSISTANT

Amanda joined the SREF staff in September 2006. Amanda is pursuing a Master's Degree in Non-profit Organization Management and expects to graduate in December 2007.



Allison Ginn::

STUDENT ASSISTANT

Allison joined the SREF staff in late 2006. She is currently pursuing a Masters of Science Degree in Forestry. After graduation, Allison plans to move to a remote location where she can pursue a career in climbing.

SREF would also like to thank the following people who have worked with us throughout 2006:

Allyson Lawrence ::

ADMINISTRATIVE ASSISTANT

Allyson performed many administrative and educational duties while employed with the SREF. Her forest skills and administrative skills served our office well for several years.

Bryan Jordin :: IT PROJECTS MANAGER

Bryan served as our IT Projects Manager, working both in Athens with SREF and from his office in Atlanta.

Stephen Pavlik :: WEB SYSTEMS DEVELOPER

Stephen worked closely with the other IT professionals to develop several website applications.

Todd Elsbernd :: WEB SYSTEMS DEVELOPER

Todd was responsible for several website upgrades and enhancements including the Forest Encyclopedia version 3.0.

Additional Student Workers ::

Amy Eller, Latasha O'Lori, & Lindsey Fisher

PROGRAMS & INITIATIVES



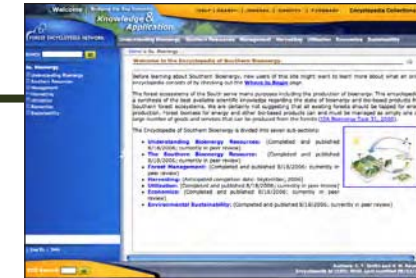
Programs and initiatives with a regional scope are imperative to the success of the Southern Regional Extension Forestry program. These include multi-state and regional projects that are coordinated by individuals, states or agencies that involve the Southern Regional Extension Forestry office in one way or another. In 2006 we continued to build upon several strong programs started in previous years while also expanding this base with new innovative initiatives.

SUSTAINABLE FORESTRY

Regional Biomass Program ::



In 2006, the Southern Regional Extension Forestry office continued its work on the Sustainable Forestry for Bioenergy and Bio-based Products Initiative, an innovative educational and technology transfer project lead by the Southern Forest Research Partnership with funding from the US Department of Energy and the US Department of Agriculture. The project is in its final stage of development, and thus far, major products resulting from needs assessments carried out early on in the project include an on-line encyclopedia titled the Encyclopedia of Southern Bioenergy, which is part of a family of encyclopedias called the Forestry Encyclopedia



Network, a training curriculum notebook for natural resource and extension professionals that incorporates PowerPoint® presentations, detailed trainer notes, fact sheets, additional resources, and a comprehensive glossary; a web-based, distance-learning course; and a web-based information portal containing bioenergy and biomass related links, images, news, and events. Topic areas covered by the initiative include: Understanding Bioenergy Resources, the Southern Bioenergy Resource, Bioenergy Production from Southern Forests, Harvesting, Utilization, Economics of Forest Biomass and Bioenergy, and Environmentally Sustainable Production Systems.

FOREST ENCYCLOPEDIA NETWORK.

The Encyclopedia of Southern Bioenergy Resources contains 229 pages of text, 280 images, and 416 citations. Six of the seven modules have been peer-reviewed and published. The remaining module is currently undergoing the peer-review process. All seven modules of the Encyclopedia of Southern Bioenergy Resources are accessible at www.forestencyclopedia.net.



TRAINING NOTEBOOK. Content developed for the training curriculum notebook is modified encyclopedia text. However, in some cases, additional literature was needed, and thus, additional text was created for the training notebook specifically. A variety of materials exist within the notebook, all meant to increase its flexibility and usefulness. A trainer can pull together the particular elements that will best suit his or her distinct training style and participant needs. Each of the seven modules includes the following materials: fact sheets, PowerPoint® presentations, an activity, evaluation resources, and an additional resources list.

FOREST BIOENERGY WEB PORTAL. The Forest Bioenergy portal is an online, interactive resource designed for information sharing among natural resource

management and extension professionals as well as community planning and development professionals. It is a repository of information related to forest biomass product use designed such that members can easily upload and the public can easily download relevant biomass-related information. The gateway includes access to publications, presentations, links, events, videos, and images.

Titled “Forest Bioenergy: Sustaining our Resources for a Renewable Future...,” the portal is accessible at www.forestbioenergy.net. Becoming a contributor is fairly simple; one simply creates a user name and password. All contributions are peer-reviewed and published by site web masters. Future plans for the website include the addition of case studies, activities, and other educational tools designed to help users of the portal better understand the subject matter themselves and better convey subject matter information to their audiences.

WEB-BASED LEARNING MODULES.

One outcome of the bioenergy training initiative is the development of several web-based learning modules housed at The National Learning Center for Private Forest and Range Landowners, a collaboration of USDA



CSREES personnel, extension forest and range faculty, land grant universities, and other stakeholders. The learning center, via the World Wide Web, provides: 1) a variety of multimedia resources that can be adapted to meet individual programming goals; 2) a national directory that helps landowners to connect to their local agents; and 3) a reference section that is an effective avenue for distributing publications to natural resource management clientele. The web-based learning center will host six self-paced, interactive modules ranging from an introduction to woody biomass for bioenergy to the sustainability of the woody biomass resource. Modules are accessible at <http://www.forestandrange.org/Biomass>.

WOOD TO ENERGY TRAINING PROGRAM. In addition, the SREF office is a partner with another regional biomass training grant based at the Southern Center for Wildland-Urban Interface Research and Information in Gainesville, Florida. The SREF will assist University of Florida and USDA Forest Service personnel with the outreach phase of this project, scheduled for 2006 and 2007. More information on this project can be found at http://www.interfacesouth.org/products/Technical%20Summary_biomass%20project.pdf.

Master Tree Farmer Level II ::

The Master Tree Farmer (MTF) courses are designed to enable landowners to become comfortable with forest and land management practices and to understand the concepts so they can talk effectively with professionals about their interests and desires for their property. The MTF Level II program was designed for people who have completed the MTF Level I course, or who have experience with forest management activities. In particular, the course covered such topics as managing the forest site, forest management options, Best Management Practices and water quality, controlling unwanted vegetation, forest health, forest measurements wildlife habitat management and landowner success stories. The course was broadcast via satellite from the studios of Clemson University to 504 participants at sites in 7 states. Value of the program can be seen in the shift in knowledge levels in the table to the right. These increases in knowledge levels will not only positively affect the management practices on over 200,000 acres of forestland owned by the participants, but it also is expected to save landowners \$6.4 million dollars and earn them as much as \$8.2 million.

VHS and DVD copies were made available for distribution, so that the value of this program will continue to be felt for many years. SREF also developed streaming video of these courses that will be available online in mid 2007 at <http://www.sref.info>.

KNOWLEDGE LEVEL	% BEFORE PROGRAM	% AFTER PROGRAM
Excellent	4	13
Good	20	62
Average	30	22
Fair	34	3
Poor	12	—

Landowner knowledge level about forestry before and after the Master Tree Farmer II Program.



Southern Forestry GIS Conference ::

The Southern Regional Extension Forester along with professionals from the southern forestry GIS community coordinated the original Southern Forestry GIS conference in the mid 1990's. SREF assisted with the fifth installment of this conference. Specifically, the SREF assists with the development of the website <http://www.soforgis.net>, marketing the program and assistance with other aspects of program development. The conference was held In Asheville, North Carolina with over 100 participants. For more information visit <http://www.soforgis.net>.

URBAN, COMMUNITY, & INTERFACE FORESTRY

Southern Wildland-Urban Interface Council ::

The Regional Extension Forester represents Cooperative Extension as a member of the Southern Wildland-Urban Interface Council. The Council, which is composed of members from state forest agencies, the USDA Forest Service, academia, Cooperative Extension, and non-government organizations, supports the leadership of the Southern Group of State Foresters by identifying and addressing wildland-urban interface issues. The Council also serves as the official advisory group of the Southern Center for Wildland-Urban Interface Research and Information in Gainesville, Florida by guiding technology transfer activities and identifying research needs. The SREF is assisting with the marketing of train-the-trainer curriculum materials for state forestry and Extension use. See page 15 for more information on this project.

Changing Roles: A Professional Development Program ::

In 2006, the Southern Group of State Foresters in partnership with the USDA Forest Service, Southern Center for Wildland-Urban Interface Research and Information (SCWUIRI), the University of Florida, School of Forest Resources and Conservation, and the U.S. Fish and Wildlife Service unveiled a wildland-urban interface (WUI) professional development program. Changing Roles: A Professional Development Program provides state and federal natural resource agencies with a set of flexible resources to conduct their own training programs, aimed toward building skills and tools to successfully tackle WUI issues (i.e. rapidly growing communities, conflicting landowners' management goals, residents not understanding the benefits of resource management, and the resulting risks to environmental quality and human quality of life). A Train the Trainers was held in Decatur, Georgia just outside of Atlanta in February. The Southern Regional Extension Forester provided assistance to this effort by working with state Extension Directors, ANR Program Leaders and specialists/agents to ensure Extension was part of the program. In addition, the SREF provided review of the training materials. Sarah Ashton also authored several of the fact sheets in the training manual.

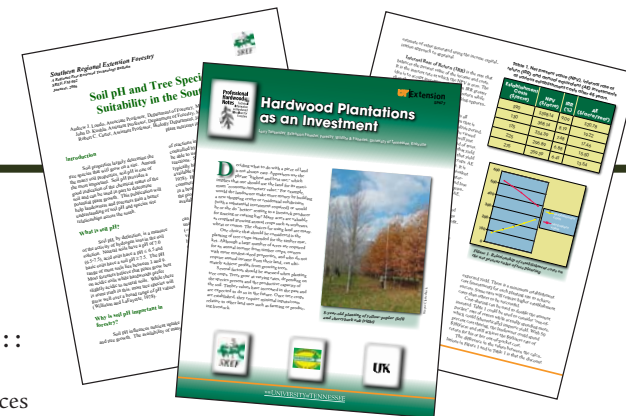
ENHANCED DELIVERY, COMMUNICATIONS & PARTNERSHIPS

Regional Publication Series ::

The Southern Regional Extension Forest Resources Publication Series is a peer-reviewed online publication system of the Cooperative Extension Service Southern Region. The series seeks to expand the distribution of state-level Extension publications and encourages the development of new, regionally authored Extension and technology transfer publications that address regional issues and audiences. The series is housed online at <http://www.sref.info> in a print-on-demand format and uses a regional numbering system along with a regional logo. Materials are submitted in an electronic format and are subject to a peer review process that involves a primary topic associate editor and two independent reviewers. More detailed information on the series is available at <http://www.sref.info/regionalpublications>.

Several publications have been peer reviewed and published online at www.sref.info, including:

- Measuring Survival and Planting Quality in New Pine Plantations
- Soil pH and Tree Species Suitability in the South
- New Pine Planting Strategies for the Western Gulf States
- Managing Oak Decline
- Oak Shelterwood: A Technique to Improve Oak Regeneration



- Hardwood Plantations as an Investment
- Forest Management Strategies to Minimize the Impact of Gypsy Moth
- Two-Age System and Deferment Harvests
- Treatments for Improving Degraded Hardwood Stands
- Pesticide Development: a Brief Look at the History
- Use Preservative-treated Wood & Integrated Pest Management When Rebuilding

Other regional peer reviewed publications are in various stages of review and publication.

Video Digitizing Project ::

Over the years the SREF office has collected hundreds of VHS videos from around the U.S., many of which were produced by Extension programs for educational purposes. In 2005, the SREF staff completed the task of digitizing and cataloging all of the VHS videos in their library that commenced the previous year. Since the SREF office frequently receives additions to their library, this project will continue indefinitely. In 2006, the process was initiated to place many of these videos online. The url <http://www.forestryvideos.net> was purchased and several videos will be databased online at this address.

Regional Extension Forester Awards ::

Each year the Regional Extension Forester solicits nominations from around the region for consideration for a Southern Forest Resources Specialist Award. In 2006 close to fifty applications were received. The nominations were judged by unit leaders at their annual meeting in San Antonio. Results are shared with the forestry community and posted online at <http://www.sref.info> (see the table to the right for the 2006 recipients).



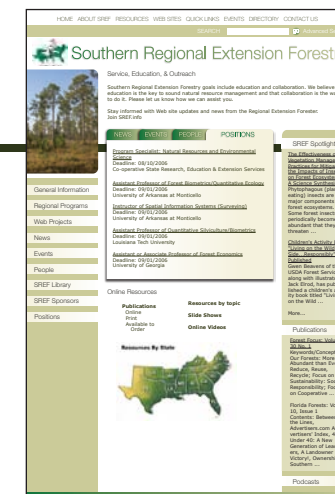
Category	Awardees	Institution	Project Title
Computer Software and/or Website	Rene Strnad and Robert Bardon	North Carolina State University	NCSU Extension Forestry Website
Extension Newsletter	Richard Vlosky	Louisiana State University	Louisiana Forest Products Development Center Newsletter
Extension Publication	Lin (da C.) Roth	Clemson University	Life at the Water's Edge: A Shoreline Resident's Guide to Natural Lakeshore and Streamside Buffers for Water Quality Protection in South Carolina
Extension Publication	Wayne K. Clatterbuck, P. Daniel Cassidy, Craig A. Harper, Joshua Idassi, Ron Hay, David Mercker, & Fitzroy Bullock	University of Tennessee	A Southern Pine Management Guide for Tennessee Landowners
Extension Publication	Christopher Evans, Charles T. Bargerion, David J. Moorhead & Keith Douce	The University of Georgia	Invasive Weeds in Georgia: You Can Help Stop Their Spread!
Extension Publication	Stephen G. Dicke	Mississippi State University	Preserving Trees in Construction Sites
Extension Publication	Sam Jackson and Wayne Clatterbuck	University of Tennessee	Identification and Control of Non-Native Invasive Forest Plants in Tennessee
Journal Publication (trade, business or research)	Todd F. Shupe	Louisiana State University	Past, Present, and Future of Preservative-Treated Wood
Journal Publication (trade, business or research)	Martha C. Monroe and Kristen Nelson	The University of Florida	The Value of Assessing Public Perceptions: Wildand Fire and Defensible Space
Journal Publication (trade, business or research)	David C. Mercker	University of Tennessee	Making the Most of Your Quality Hardwood Veneer

High
Distinction

High
Distinction

Category	Awardees	Institution	Project Title
Journal Publication (trade, business or research)	Hallie Dozier	Louisiana State University	Hire an Arborist for Residential Tree Needs
Journal Publication (trade, business or research)	Andrew Londo and Stephen Dicke	Mississippi State University	Super Pines Really are Super.
Mixed Media — General Audience	Michael Mengak	The University of Georgia	Dealing with Nuisance Wildlife Publication and Powerpoint Presentation
Mixed Media — Youth & Teacher Education	Robert Daniels, Robert Horton, Keryn Page, Rae Wilkinson, Jim Freed, Sanford Smith, Natalie Carroll, Rita McKenzie, Jim Nichnadowicz, Peggy Preusch, Ralph Johnson, Gwenda Adkins, Marcella Szymanski, Martha Monroe, Kris Irwin, Julie Sexton, Carol Hanley, & Ed Faurot.	Various States	Forests of Fun 4-H Forestry Curriculum and Supporting Website
Mixed Media — Youth & Teacher Education	Daniel L. Goerlich, Jeff Kirwan, Carl Estes, Joe Hunnings, Elaine Oliver, Jim Willis, Gabrielle Amos-Minnich, Joshua Napier, Lex Bruce, Jason Fisher & Karen Cronin	Virginia Tech	4-H Virtual Forest
Program Organization	Adam K. Downing	Virginia Tech	Portable Sawmilling and Drying Workshop
Project Administration	Hallie Dozier	Louisiana State University	Louisiana Arborist Continuing Education
Research Technology Transfer	David Dickens, James Barnett, William Hubbard, Eric Jokela and George Hernandez	Various states	Slash Pine: Still Growing and Growing!: Proceedings of the Slash Pine Symposium

Footnote 1: Awards were judged by 8 individuals from across the Southern Region. "Highest Distinction Award" represents that nomination that received the highest overall score. "High Distinction" represents those nominations that were consistently ranked the highest by the judges. More information concerning these awards will be available at www.sref.info in the near future.



SREF.info Website and Newsletter ::

The Regional Extension Forester communicates timely information related to forestry in the South as well as nationally through the regional Extension website, <http://www.sref.info>. The site is home to thousands of news articles, citations, events, and personnel announcements that can be accessed with just the click of a mouse. Registered users of the site can receive an electronic newsletter distributed the first week of month that summarizes the news from around the region. Be sure to bookmark www.sref.info for all of your forestry information needs.

PRODUCTS & TECHNOLOGY



One of the true success stories here with the Southern Regional Extension Forestry office is the explosion of internet technology sites we currently develop and manage. These efforts have been largely due to the excellent staff currently employed. Each of these websites meets the needs of a number of audiences. In this section, each site is highlighted along with the collaborators or partners who are assisting with the effort, the audiences that the site is designed for, a general description of the website, accomplishments for 2006 and any website statistics/impact data that might have been collected.

In **2006**,
URBAN FORESTRY SOUTH.ORG
served over **175,000**
REQUESTS FROM USERS
in **160** different
COUNTRIES.



INTERNET APPLICATIONS

Urban Forestry South Expo ::
<http://www.urbanforestrysouth.org>

ABOUT: The Urban Forestry South Expo (UFS) is a central database of knowledge, information, and resources for professionals and other interested parties in the urban forestry arena. It is the primary website for the Center for Urban Forestry Research & Technology Transfer of the USDA Forest Service Southern Region.

AUDIENCE: State urban forestry coordinators, urban forestry students, city planners, and others involved in urban forestry and development

COLLABORATORS/PARTNERS:

USDA Forest Service-Southern Research Station

SITE FEATURES: Tree ordinances, News, Contacts, Events, Resources, Research Projects, Funding Opportunities, Jobs

2006 ENHANCEMENTS: UFS was continually updated with new urban forestry related materials. The content collection interface was improved to speed the entry and

dissemination of urban forestry information for both contributors and users.

STATUS: The website is currently open to the public and is being used by the urban forestry community in the South and across the country.

Forest Encyclopedia Network

<http://www.forestencyclopedia.net>

ABOUT: The Forest Encyclopedia Network (FEN) is a knowledge management system composed of the following six encyclopedias:

- Encyclopedia of S. Appalachian Forest Ecosystems
- Encyclopedia of Southern Fire Science
- Encyclopedia of Southern Forest Science
- Encyclopedia of Southern Bioenergy Resources
- Encyclopedia of Forest Environmental Threats
- Encyclopedia of the Southern Pine Beetle

AUDIENCE: Natural resource professionals, Fellow scientists, Landowners, Students, and others interested in management and our Southern forests.

COLLABORATORS/ PARTNERS:

USDA Forest Service
– Southern Research
Station



2006 ENHANCEMENTS:

SREF finished authoring and continued to maintain the three newest encyclopedias: Southern Bioenergy Resources, Forest Environmental Threats, and the Southern Pine Beetle encyclopedias.

The new version of FEN, 3.0, is well into development, and it will provide many improvements over the current version such as a redesigned internal structure that will allow information to be shared between encyclopedias without duplication. In addition, a dynamic help system, an improved rich content creation editor, and a full peer-reviewed workflow system have been created. The enhancements will provide a much more valuable, dynamic, and user-friendly browsing experience.

STATISTICS: During 2006, FEN served almost 100,000 requests to users from 100 countries.

STATUS: Version 3 is currently in development, version 2 is open to the public and is serving users daily.

Reforestation, Nurseries and Genetics Resource ::

<http://www.rngr.net>

ABOUT: The Reforestation, Nurseries, and Genetics Resources (RNGR) website supplies professionals who grow forest and conservation seedlings with the very latest technical information.

AUDIENCE: Professionals

COLLABORATORS/PARTNERS:

USDA Forest Service RNGR National Team

SITE FEATURES: Publications, Forest Nursery Notes, Tree Planters' Notes, National Nursery Proceedings, Applications, Research Projects, Forums, Contacts

2006 ENHANCEMENTS: Many new publications were added to RNGR's repository. Notably, seventeen editions of the Southern Forest Tree Improvement Conference were scanned and added and ten new editions of the National Nursery proceedings were also archived.

STATISTICS: RNGR is one of the most popular sites that SREF maintains. In 2006, 175,000 users from over 175 countries perused the site for reforestation, nurseries, and genetics information.

STATUS: Open to the public with an international clientele.





Association of Natural Resource Extension Professionals

<http://www.anrep.org>

ABOUT: ANREP brings Extension professionals together to discuss mutual natural resource issues, needs, and opportunities.

AUDIENCE: Active and retired county, area, state, and national level cooperative Extension Service (CES) professionals working in environmental education, fisheries, forestry, wood sciences, range, recreation, waste management, water, wildlife, and related disciplines.

COLLABORATORS/PARTNERS:

Joint Council of Extension Professionals (JCEP)

SITE FEATURES: News, Events, Position Announcements, Member Directory, Membership Information, Association Contact Information

2006 ACTIVITIES & ACCOMPLISHMENTS: The ANREP website underwent a complete overhaul, including a redesign of the website interface, and backend adjustments that have increased the efficiency of ANREP's service to extension professionals.

STATUS: The ANREP website is online and open to ANREP members and other audiences. The new and enhanced site will be ready for launch in 2007.



Eastern Forest Threat Center

<http://www.forestthreats.org>

ABOUT: The Eastern Forest Environmental Threat Assessment Center provides the latest research and expertise on forest health and forest threats in the Eastern United States.

AUDIENCE: Land managers, policymakers, scientists, administrators, students, landowners and many others.

COLLABORATORS/PARTNERS: USDA Forest Service, National Environmental Modeling and Analysis Center

SITE FEATURES: Information and contacts for forest threats in the eastern United States such as insects, diseases, invasive plant, climate change, wildland fire, and loss of open space, Online Tools, Projects, News, Events.

2006 ACTIVITIES & ACCOMPLISHMENTS: SREF worked with the center personnel to design and launch their website in 2006. As content is added to the site in 2007, the site will also be marketed to increase its visibility and usefulness to the landowner community.

STATUS: The site is open to the public



Forest Bioenergy Web Portal

<http://www.forestbioenergy.org>

ABOUT: The Forest Bioenergy website is one of several products resulting from the Southern Forest Research Partnership (SFRP) bioenergy training initiative. The site is a repository of information related to biomass product use designed so members can easily upload and the public can easily download relevant biomass-related information.

AUDIENCE: Natural resource management, extension, and community planning and development professionals and others interested in forest bioenergy.

COLLABORATORS/PARTNERS: Southern Forest Research Partnership, Daniel B. Warnell School of Forestry and Natural Resources – UGA, Texas A&M University, The National Learning Center for Private Forest and Range Landowners, University of Toronto

SITE FEATURES: News, Links, Events, Images, Publications, Presentations, and Glossary

2006 ENHANCEMENTS: Throughout 2006, SREF developed the new Forest Bioenergy portal. SREF created an interactive photo gallery and filled the portal with bioenergy related content.

STATUS: The site will open to the public in mid 2007.

Georgia Grows
<http://grows.sref.info>

ABOUT: Members exchange ideas on how to manage forest resources more effectively in Georgia.

AUDIENCE: Individuals or organizations having an interest in Georgia's forests

COLLABORATORS/PARTNERS: Georgia Forestry Commission, SREF, USDA Forest Service, Daniel B. Warnell School of Forestry and Natural Resources — the University of Georgia, Georgia Department of Natural Resources, USDA Natural Resource Conservation Service, National Wild Turkey Federation, Quality Deer Management Association, Georgia Forestry Association, Georgia Land Conservation Program

SITE FEATURES: News, Events, Publications, Links, Photo Gallery

ENHANCEMENTS: During 2006, SREF worked with the Georgia Forestry Commission to redesign and enhance the GROWS website.

STATUS: The website redesign is still in development and will be launched in mid 2007.



a new AUDIENCE: exploring THE VALUE OF interactive DESIGN

With the rapid advancement of technology and the increased dependence on the internet as an educational and professional resource, the SREF team has identified a degree of interactivity that is expected from the audience. All of SREF's projects could benefit from interactive design in the future because it is a unique opportunity to engage the audience with the tools and resources provided through the site. In 2006 we had our first interactive design endeavour with the Caring for Deer and Forests website. SREF worked with a team to develop an interactive educational Flash® application (see right) that displays the different characteristics of forests at different levels of deer impact. SREF hopes to bring more elements of interactivity into their web-projects so that the websites are more attractive and more memorable for the audience and further support the objectives of the projects.

Caring for Deer and Forests
<http://www.deerandforests.org>



and strategies to care for deer and forests together; and (2) to serve as a clearinghouse for resources about connections among people, deer, and forests.

AUDIENCE: Landowners, hunters, WUI landowners, natural resource professionals

Below: Flash application for the Caring for Deer and Forests Website.



COLLABORATORS/PARTNERS: USDA Forest Service, Penn State University, SREF

SITE FEATURES: Introductory information on deer and forests, Resources, Case Studies, Links, Publications, Video, Contacts

2006 ENHANCEMENTS: In 2006, SREF designed, developed and reviewed the Deer & Forests website. SREF developed a Flash® based interactive application that describes the key aspects of different levels of impact on a forest. SREF will continue to improve the Deer & Forests site in the coming years.

STATUS: The base website has been completed and is now open to the public for use.

The Southern Regional Extension Forestry Website

<http://www.sref.info>



ABOUT: This website is designed to be a portal for use by various audiences interested in forestry and natural resource education.

AUDIENCE: Foresters or anyone interested in forestry related topics in the Southeastern United States.

2006 ENHANCEMENTS: In 2006 several hundred publications were added into the publications library, podcasts, blogs and streaming video and other tools.

In addition, a new website design was developed in 2006 and should be released in early 2007.

STATUS: The SREF website is currently open to the public, and the redesign will launch in early 2007.

International Institute of Tropical Forestry

<http://www.tropicalforestry.net>



ABOUT: The International Institute of Tropical Forestry (IITF) website aims for the dissemination of the knowledge and

resources developed by IITF staff. This information is critical to sustaining tropical ecosystems beneficial for humankind worldwide.

AUDIENCE: Foresters (tropical), scientists, students & the environmental community

COLLABORATORS/PARTNERS: USDA Forest Service-International Institute of Tropical Forestry, SREF

SITE FEATURES: Projects, Products and publications, Directory, Photo gallery, News, Events, Links and Job opportunities all related to Tropical Forestry

2006 ENHANCEMENTS: SREF continued maintenance of the website. Presently IITF's scientists are populating the website with their extensive tropical forestry material. Future enhancements have already been planned that will increase the usefulness and accessibility for a larger audience.

STATUS: The website is currently open to the public and is gaining in popularity.

University of Georgia Biorefining and Carbon Cycling Program

<http://www.biorefinery.sref.info>

ABOUT: The website for the University of Georgia's Biorefining and Carbon Cycling Program focuses on Research, Outreach, and Education concerning aspects of biomass production and conversion to value added products including fuels, energy, and specialty chemicals, combining both information, news and events pertaining to the program, as well as resources and information for the general public about biomass research and development.

AUDIENCE: Scientists, Students, Teachers, Biorefining and carbon cycling professionals and anyone interested in learning more about biorefining and carbon cycling.

COLLABORATORS/PARTNERS: the University of Georgia Biorefining and Carbon Cycling Program

2006 ACTIVITIES & ACCOMPLISHMENTS: In 2006, the SREF worked on the redesign and relaunch of the biorefining website. Plans to expand an area of the website directed towards children and teens as well as

teachers will be pursued in 2007.

STATUS: The website is currently open to the public.



Carbon Trading : A Primer for Forest Landowners :: <http://carbon.sref.info/>

ABOUT: The Carbon Trading: A Primer for Forest Landowners website provides information regarding what is required by a landowner to trade carbon, possible costs, and potential income. It also provides information on which U.S. states are in the process of developing markets and how they are doing it.

AUDIENCE: Forest Landowners, policymakers, forestry professionals

COLLABORATORS/PARTNERS: National Commission on Science for Sustainable Forestry, Daniel B. Warnell School of Forestry and Natural Resources — the University of Georgia, SREF

SITE FEATURES: General carbon trading information, carbon calculator, maps, links, contacts

2006 ACTIVITIES & ACCOMPLISHMENTS: In 2006, SREF developed the Carbon Trading website and released it to the public. SREF will continue to maintain and improve the site in the future.

STATUS: The site is currently open to the public.



Forest Landowners Association <http://www.forestlandowners.com>

ABOUT: The Forest Landowners Association (FLA) is an online hub for forest landowners across the nation. The portal provides timely news, events, and articles that are relevant to current issues and needs.

AUDIENCE: Forest Landowners, forestry professionals, others interested in private lands management.

COLLABORATOR: Forest Landowners Association



2006 ENHANCEMENTS: SREF added an online directory to the site. The directory contains entries from 35 forestry related categories and all states. SREF also continued to electronically archive the popular 'Forest Landowner Magazine,' which will be available to members through this new site. SREF also worked with FLA to integrate online payments into the site. SREF will continue to work with Forest Landowners Association in 2007 in order to refine and enhance the website.

STATUS: The website is open to Association members and the general public.

STATISTICS: During 2006, the site had approximately 65,000 hits.

Forestry BMPs <http://www.forestrybmp.org>

ABOUT: The site focuses on issues of water quality and best management practices on a state and territorial level.

AUDIENCE: Water quality experts, state forestry agencies, state and county Extension agents, environmental community, students, policymakers, others.

COLLABORATORS/PARTNERS: Daniel B. Warnell School of Forestry and Natural Resources — the University of Georgia, USDA Forest Service, National Council of Air and Stream Improvement (NCASI) and SREF.

2006 ACTIVITIES AND ACCOMPLISHMENTS: During 2006, SREF continued to populate the site with information on current news, events, legislation, permits, BMP manuals, audits, contacts and organizations for the state of their choice for members of the logging, forestry, environmental, conservation and other communities.

STATUS: The website is open to the public and is being used by the water quality and environmental communities.



Forest Productivity Website

<http://www.forestproductivity.net>

ABOUT: Released in 2005, the Forest Productivity website was created to provide site visitors and forestland managers with the most current, unbiased, science-based, forest productivity information available in support of best management decisions for forestlands. With applied research articles, how-to's, and technology updates, you can find information on subject areas such as site preparation, genetics, planting, fertilization, herbicides, and economics as they relate to forest productivity. A key objective of the website is that natural resource managers will be enabled and equipped to make better, cost-effective forest management decisions to optimize forest productivity.

AUDIENCE: Private non-industrial forest landowners, forestry consultants, state and federal foresters, natural resource managers, extension agents, other interested persons

COLLABORATORS/PARTNERS: Daniel B. Warnell School of Forestry & Natural Resources — the University of Georgia, the Potash & Phosphate Institute, the Foundation for Agronomic Research

ENHANCEMENTS: In 2006, SREF continued to maintain the Forest Productivity website and upgraded it to the newest version to keep it as current and accessible to the maximum amount of users.

STATUS: Open to the public.

DIGITAL MEDIA



CD & DVD Production

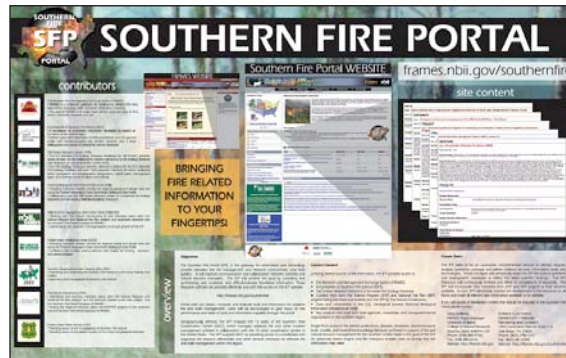
SREF developed several materials for distribution to the Extension System including the Southern Forestry GIS CD Conference Proceedings, the Forest*A*Syst CD, and Master Tree Farmer DVD's.

Podcasts and video streams

SREF posted several podcasts and video streams on the sref.info website including:

-  · Reclaiming the Future: Reforestation in Appalachia (2006)
-  · The Greatest Good (series)
 -  1 - The Fight for Conservation (1864 - 1910)
 -  2 - Building the System (1911 - 1940)
 -  3 - Boom! (1941 - 1970)
 -  4 - The Greatest Good? (1971 - 2005)
-  · The Careful Timber Harvest (1994)
-  · The Missing Fires (undated)
-  · Poultry Litter Application on a Pine Plantation (1997)
-  · Meet Your Feet
-  · Managing Urban Soils
-  · Low Cost Forest Regeneration (1996)
-  · Danger on the Highway (1993)
-  · Ease Up: Wood Chip Awareness Program (1989)
-  · Better Reclamation with Trees
-  · Asian Longhorned Beetle: First Line of Defense (2001)
-  · Riparian Forest Buffers: The Link Between Land and Water (undated)
-  · Protecting Wood With Borates (undated)
-  · Planning Your Timber Harvest (undated)
-  · Nine Lives of the Pine Seedling (undated)
-  · Tree Pruning: The Importance of Proper Tree Maintenance (1997)
-  · Lyme Disease: A Growing Threat (1986)
-  · Wood Preservation: Safe Use of Preservative Treatments (1985)
-  · Logging, Best Management Practices, & Water Quality (1990)
-  · Firewise Landscaping (series)
 - Part I: Overview (1993)
 - Part II: Design and Installation (1994)
 - Part III: Maintenance (1994)
-  · Living With Wildlife (undated)
-  · Termites, Beetles, and You (undated)
-  · Construction of a Forest Road With Selected Best Management Practices (1994)
-  · Rice Field Management for Waterfowl (undated)
-  · Gypsy Moth: A Balanced Perspective (1991)
-  · Forestry: An Intricate Balance: The First 200 Years (1991)
-  · Living With the Southern Pine Beetle (undated)
-  · USDA Forest Service - Forest Pest Management - Southern Region (2006)
-  · Growing and Marketing Shiitake Mushrooms on Natural Logs (undated)
-  · Firewood - Now is the time to cut (2005)
-  · New Years Resolutions for Forest Landowners (2005)
-  · Low Cost Forest Management Alternatives (1991)
-  · Uneven-Aged Management of Loblolly/Shortleaf Pine (1992)
-  · Precommercial Thinning (undated)
-  · The Crossett Story (2002)

 Video File =  Audio File



A



B



C

Promotional Materials, Exhibits and Posters Designed

The SREF office developed or updated the following promotional materials in 2006:

- The Southern Fire Portal Poster
- The Southern Fire Portal Brochure
- The Southern Regional Extension Forestry Brochure
- The FRAMES Exhibit and Display
- The Southern Regional Extension Forestry Display



E

D



COMMITTEE & SPECIAL ASSIGNMENTS

The Southern Regional Extension Forester and staff took the opportunity to make presentations and to facilitate activities in 2006 that communicate the efforts of Cooperative Extension and partnering organizations and to improve regional programming in the South.

JOINT FIRE SCIENCE PROGRAM REVIEW (JFSP) OF PROPOSALS. The SREF provided assistance to this multiagency effort. Several proposals were reviewed and the SREF spent the week in Atlanta with other reviewers in ranking proposals based on merit.

SOUTHERN ALLIANCE FOR THE UTILIZATION OF THE BIOMASS RESOURCE (SAUBR). The SREF is a board member and regularly participants in board activities and decisions. This Alliance was formed to promote the use of woody biomass for energy and other products in the Southern United States.

FOREST ENCYCLOPEDIA NETWORK (FEN) ADVISORY BOARD. The SREF is co-chair of the FEN advisory board. This board provides oversight and guidance to this unique network of online encyclopedias. The board provides input into direction, marketing, promoting, and evaluating the effectiveness of this multimillion dollar effort.

MASTER TREE FARMER (MTF) STEERING COMMITTEE.

The SREF is co-chair of this regional program designed to provide forestry and natural resources information to landowners and the profession via satellite and internet based distance education. The Steering Committee provides oversight on program format, promotion, topics and funding among other duties.

SOUTHERN FORESTRY TECHNOLOGY TRANSFER AND SCIENCE APPLICATION ADVISORY COUNCIL.

The SREF is a member and co-signer of a Charter designed to bring the USDA Forest Service and the Extension Service closer together on technology transfer and science application.

FOREST LANDOWNERS ASSOCIATION EDITORIAL BOARD.

As a member of this committee the SREF provides input into the bimonthly magazine and suggests several topics and Extension authors for various articles.

USDA FOREST SERVICE TECHNICAL ASSISTANCE VISIT FOR THE RECREATION AND TOURISM UNIT.

As a member of the this team, the SREF provided input into the programs and research being conducted by this research unit of the USDA FS Southern Research Station.

SOUTHERN FORESTRY GIS (SoForGis) CONFERENCE

PLANNING TEAM. The SREF provided assistance to this committee/effort by providing services of the SREF IT Team (via website production). The SREF also provided marketing/promotion and various other types of support for the conference including assisting with production of proceedings CD's.

VISUALIZING FUTURE LANDSCAPES PROJECT.

As a Co-Principal investigator for this project, the SREF provided input into deliverables. This project is an RREA focus funds project designed to develop materials for use by county and state Extension professionals in the area of visualizing the impact of land use change. The project will involve development of an online portal, an atlas, a brochure, a final report, and a 4-page executive summary.

SOUTHERN FOREST RESEARCH PARTNERSHIP (SFRP).

The SREF is a member of the SFRP and works closely with their Executive Director to develop joint programs. One example is the current biomass training project. In addition, the SREF made presentations to the SFRP Board of Directors in 2006.

USDA FOREST SERVICE OUTLOOK PROJECT. Developing Science Responses to Address Decision Maker's Future Needs — the SREF assisted the National Council for Science and the Environment with this effort designed to provide input into the USDA Forest Service Research Unit. This involved several interviews and meetings.

FOREST RESOURCES SYSTEMS INSTITUTE (FORS)

ARCHIVING PROJECT. The Forest History Society contacted the SREF about obtaining and organizing the FORS records. These records had sat in a Clemson warehouse for several years following the termination of the Institute. The SREF went through several boxes of records and provided the Forest History Society with these records in 2006.

NATIONAL URBAN AND COMMUNITY FORESTRY

TECHNOLOGY TRANSFER TEAM. The SREF is a member of this national team with responsibilities for guidance and direction setting for urban forestry technology transfer.

THE ASSOCIATION OF NATURAL RESOURCE EXTENSION PROFESSIONALS (ANREP) EXECUTIVE BOARD.

The SREF participants as a board member of ANREP. In addition, the IT staff of SREF provide website oversight and development duties.

THE UNIVERSITY OF GEORGIA - CENTER FOR URBAN AGRICULTURE ADVISORY COUNCIL.

The SREF participates in Center planning activities.

CARBON TRADING TEAM. The SREF is part of a team that is charged with developing educational materials and websites on carbon trading.

GEORGIA ANREP. The SREF assists the Georgia Chapter of ANREP with a variety of duties and responsibilities including maintenance of their website and annual conference planning.

UNIVERSITY OF GEORGIA BIOENERGY TEAM.

The SREF is a member of a team that is working across department lines to investigate opportunities for bioenergy in Georgia and the South.

NATIONAL 4-H FORESTRY INVITATIONAL COMMITTEE.

As a member of the committee, the SREF provides insight into administration and funding issues of the Invitational.

AMERICAN TREE FARM SYSTEM EDUCATION AND

OUTREACH COMMITTEE. The Southern Regional Extension Forester served on the National Operating Committee for several years and now supports this effort through participation in their education and outreach efforts.

SOUTHERN GROUP OF STATE FORESTERS FUTURING

SESSION. The SREF was invited to participate in a strategic planning session which reviewed the results of state listening sessions focused on the future of the Southern Forest.

PAPERS, REPORTS & PUBLICATIONS

Hubbard, W. G. Analyze Your Forestland Investment to Boost Economic and Non-Economic Returns. (2006). Tree Farmer, Volume 25, No. 3. May/June, 2006.

Hubbard, W.G. and Sandmann, L. (2007). Using Diffusion of Innovation Concepts to Enhance Program Evaluation. Journal of Extension, (accepted for publication, February 2007).

Hubbard, W.G. A Timber Update for the South. Economic Overview & Agricultural Outlook 2005-2006. AgFirst Farm Credit Bank Publication.

Hubbard, W.G. Diffusion of Innovation Concepts for Evaluating Adoption of Practice. Proceedings – International Conference on Technology Transfer in Forestry. Portland, Oregon. USDA Forest Service GTR (Pending numbering).

PRESENTATIONS & POSTERS

Howell, M.R. and B. Jackson. 2006. Andragogy's Challenge: Teaching Different Generations of Adults. A Southern Region Conference on Technology Transfer & Extension in Natural Resources. Hot Springs, Arkansas.

Howell, M.R., Cassidy, D., Clatterbuck, W. & Jordin, B. 2006. Web Sites: Characteristics and Features of Various Types of Web Based Solutions. Association of Natural Resources Professionals Annual Meeting. Park City, Utah.

Howell, M.R. and L. Schoonhoven. 2006. Caring for Deer and Forests: A Resource Center for Eastern North America - An Introduction. Center for Technology in Government - Leveraging Investments in the Electronic Commons Workshop. Albany, New York.

Hubbard, W.G., Jordin, B., Rauscher, M., & Pye., J. 2006. Using a Web-based Content Management System to Deliver Science to Natural Resource Managers: The Forest Encyclopedia Network. ForestXchange: New Approaches in Knowledge Management — An International Conference. Freiburg, Germany.

Hubbard, W.G. & Larry Biles. 2006. A History of the Capacity and Productivity of Extension Forest Resources Programs in the Southern United States with a Glimpse into the Future. A Southern Region Conference on Technology Transfer & Extension in Natural Resources. Hot Springs, Arkansas.

Hubbard, W.G. 2006. Extension & Outreach in the 21st Century: New Methods and Models for a Changing World: Are we ready for a change? Arkansas Society of American Foresters meeting. Monticello, Arkansas.

Hubbard, W.G. 2006. Forestry Issues and Opportunities in a Changing Landscape. Arkansas Forestry Association Annual Meeting. Hot Springs, Arkansas.

Hubbard, W.G. 2006. A Southern Regional Extension Forestry Update. Extension Natural Resource Unit Leaders Meeting. San Antonio, Texas.

Hubbard, W.G. 2006. A Southern Regional Extension Forestry Update. Southern National Association of University Forest Resource Programs Meeting. San Antonio, Texas.

Hubbard, W.G. 2006. Outreach & Extension Across the Digital Divide. Association of Natural Resource Extension Professionals Annual Meeting. Park City, Utah

Hubbard, W.G. 2006. History of Forestry and Forest Management in the South. Forestry for Nonforesters Workshop. Athens, Georgia.

Hubbard, W.G. 2006. Forestry Terms and Concepts. — Part II. Forestry for Nonforesters Workshop. Athens, Georgia.

Hubbard, W.G. 2006. Confessions of a Regional Extension Forester...What Really Goes on at the Multistate Level. Western Extension Foresters Annual Meeting. Anchorage Alaska.

Hubbard, W.G. 2006. A Southern Regional Extension Forestry Update. Southern ANR Program Leaders Annual Meeting. San Juan, Puerto Rico.

Hubbard, W.G. 2006. Reaching the Forest Owners of the Future. USDA Landowner Assistance Program Managers Meeting. Charleston, South Carolina.

Hubbard, W.G., Pollack, J., Gollberg, G. & S. Curd-Hetrick. 2006. The Southern Fire Portal System. 3rd International Fire Ecology & Management Congress. San Diego, CA.

Hubbard, W. G. and M. Rauscher. 2006. The Encyclopedia of Southern Forest Bioenergy — A Project Update. Southern Forest Research Partnership Board of Directors annual meeting. Lexington, Kentucky.

2007: THE ROAD AHEAD



The Southern Regional Extension Forestry office plans to continue to provide service to state Extension services and the USDA Forest Service. Several exciting activities are scheduled to allow us the opportunity to accomplish this.

The interest in web based knowledge management application continues to increase. Several projects are planned including continued expansion of the Forestry Encyclopedia Network (FEN) site to include a Forest Threats and Pine Beetle Encyclopedia. The new FEN 3.0 site will be unveiled as well which will contain a number of user-friendly enhancements. In addition, the Urban Forestry South Expo site, the IITF site and several others will be released to the general public through various channels.

On the Master Tree Farmer front, plans are to create a “mini-series” approach to programming. This concept came from the fact that many states were still very interested in the program but had tired

of the seven week format. It was decided that we would develop a three week “pilot” project to see how demand would be. The topic chosen following survey was “Planning for the Next Owner”. Topics will include estate planning, intergenerational transfer options, conservation easements, trusts, taxation issues and planning alternatives.

The SREF also plans to take a leadership role in two evaluation arenas in 2007. The first will be an assessment of the impact of the Master Tree Farmer program. The SREF plans to develop a survey to investigate the adoption of practice rates of participants. In addition, the survey will also investigate what factors influence adoption and what factors influence nonadoption. The other evaluation project will involve a regional assessment of audiences and outreach efforts of Extension, state forestry and other natural resource educators. This assessment will provide valuable data on how to reach our audiences of the future.