



**SOUTHERN REGIONAL  
EXTENSION FORESTRY**

**2008**

**ANNUAL REPORT**



# Table of Contents

2	Letter from the Southern Regional Extension Forester
4	2008 Regional Review
12	Overview of SREF
15	Meet the SREF Team
17	Programs and Initiatives
22	Awards and Recognition
23	Products and Technology
35	Presentations and Committees
40	2009: The Road Ahead



## LETTER FROM THE SOUTHERN REGIONAL EXTENSION FORESTER

Dear Forestry & Natural Resources  
Community Member,

On behalf of our staff, I'd like to welcome you to this year's installment of the Southern Regional Extension Forester's Report. This report is a collaborative effort involving all of our team and represents highlights from a small but productive staff. We have been blessed again to have an extremely talented group of individuals working with us this year and proudly report that we have increased our staff yet again in 2008. With these additions, we now have five full-time employees, one half-time graphics artist and three student workers. In these difficult economic times, this is a feat in itself! The exciting story here is that the hard work of the SREF team has led to additional opportunities to work across the region with state specialists, state forestry and natural resource agencies, federal partners and others. These projects are varied and unique in nature. They include regional assessments and program evaluation; conference organization; regional peer-reviewed publications and proceedings; Internet development sites; county, state, national and international speaking engagements; and a host of other exciting activities and projects.

Each and every one of our projects and activities is designed to first and foremost support professionals with southern Extension and also state forestry and natural resource agencies. We are organized because issues and opportunities do not stop at the state line; we are organized because together, forestry and natural resource educators can create products that are better than if they were created alone; we are

organized because state budgets have always been limited for forestry and natural resource programs and regionalization of programs can be extremely cost-effective; and we are organized because many key partners and initiatives are organized at the regional level and educational and technology transfer products should be designed to meet the needs of these partners and initiatives.

We encourage you to review the projects, products and activities highlighted on the following pages with an eye on how you or your agency might utilize them. We also encourage you to give us your input on what you see here. We are a very entrepreneurial group and would love to work with you on programs of regional significance and relevance. Our regional website portal contains more information on our programs and products, please visit <http://www.sref.info>.

We look forward to hearing from you!

Sincerely,



The Southern Regional Extension Forester and Team

\*A very special thanks to Laura Harvey and Camilla Geniatulina for such a great looking annual report. I hope you enjoy the format as much as I do.



# Meet

*the Southern Regional  
Extension Forestry Team*



*front row left-to-right: Sarah Ashton, Candee Golden, Camilla Geniatulina, Bill Hubbard*  
*back row left-to-right: Cole Sherer, Matt Howell, Darryl Outlaw,*





## 2008 REGIONAL REVIEW

The status and management of southern forests continued in the national spotlight in 2008 from a number of perspectives. Biomass alternatives, issues and prospects; climate change; natural disasters; ecosystem restoration; urban interface and sprawl; and declining traditional forest products markets were just a few of the forestry and natural resource issues grabbing the 2008 headlines. Other noteworthy forestry issues included the potential of forest ecosystem services, more specifically how these services might be marketed, quantified and valued, and the 2008 Farm Bill (officially known as the Food, Conservation and Energy Act of 2008) bringing an increased forestry presence in the Environmental Quality Incentives Program (EQIP).

Another highlighted area in 2008 was the concern that today's youth suffer from "nature-deficit disorder." This is another area of interest to those working in the natural resources field, and especially those who have an interest in youth education. Brought to the attention of many by Richard Louv's award winning book, *Last Child in the Woods*, educators in the natural resources field have been concerned with this phenomenon for many years. Perhaps this relatively new attention from the media and general public will offer opportunities to take programs like 4-H and Project Learning Tree® to new levels.

Within each of these issues lies several opportunities to educate and inform. Because forestry and natural resources educators deal with so many audiences, it is sometimes difficult to discern which is the most effective means by which to reach them. Is it the

traditional print media such as fact sheets and other publications? Is it through one-on-one or small group instruction and interaction? How about the Internet and all it has to offer? Products such as podcasts, webinars, interactive websites, streaming video and a host of other online opportunities for new and traditional audiences are becoming even more mainstream than they were just a year ago. One project the SREF team will be involved in in 2009 and 2010 is a regional audience assessment. This assessment will take a critical look at how forestry and natural resource educators currently reach their audiences and how effective they have been. The assessment should help us identify successes, failures, opportunities, and challenges in reaching our diverse audiences.

The Southern Regional Extension Forestry (SREF) team has worked with state Extension units, key partners and others to develop educational responses to many of today's forestry and natural resources issues. These include both high tech and high touch approaches to education. For example, SREF has been involved in developing workshops and materials in the area of forest-based bioenergy. These materials, available online at <http://forestbioenergy.net>, are designed for various audiences, all of whom have questions or interests in this alternative form of energy and fuel. In addition, the SREF team assisted with the acquisition of over \$100,000 in grant money for the development of an extension Forest-based Bioenergy Community of Practice by two land-grant universities in the South.

The SREF team has also been heavily invested in online technology for the past ten years. SREF provides a number of online tools and technologies

that are designed to assist state and county level natural resource educators in Extension and other agencies with completing their jobs in an efficient and effective manner. Websites such as the Forest Encyclopedia Network (<http://forestencyclopedia.net>), Forestry Videos (<http://forestryvideos.net>), and Forestry and Natural Resource Webinars (<http://forestrywebinars.net>) are just a few examples of sites where educators can obtain materials for their programming. In addition, the SREF homepage (<http://sref.info>) contains thousands of individual pieces of valuable information (articles, newsletters, links, podcasts, etc.) for educators. As we become more wired, sites such as these will become critically important for educators. Time and space limit discussion and description of everything we are involved in here at the regional office, but for more information, please visit the Southern Regional Extension Forestry homepage at <http://www.sref.info>.



## STATE UPDATES

The thirteen Southern 1862 Land-Grant Universities continued to develop a wide variety of materials and deliver them to thousands of clients through their Extension Services in 2008. Forestry and natural resource Extension specialists and agents provided educational programming to forest owners, farmers, youth, urban audiences, wood-using industries, conservation organizations, communities and a host of other audiences. A very brief sampling of state highlights follow. Please visit their websites, listed on page 11, for a more comprehensive look into how their work is affecting these varied audiences.



**ALABAMA:** 18 workshops, field days, and conferences were held in 2008, providing information to more than 1500 landowners. A major effort was the Regional Cogongrass Conference held at the Arthur R. Outlaw Convention Center in Mobile, AL. The conference, “Confronting the Cogongrass Crisis Across the South,” was organized because of deep concerns expressed by many stakeholders about the unrelenting invasion of this bold, unwanted, and hard-to-control grass.



**ARKANSAS:** The University of Arkansas Cooperative Extension Service, working with partners including the Arkansas Forestry Commission and a landowner organization, developed workshops and presentations specifically targeting women forest landowners. In 2008, four workshops were held and attended by more than 70 women, most of them forest landowners. Also in 2008, two demonstration areas investigating performance of cloned willow and cottonwood seedlings were established on the University of Arkansas Agricultural Experiment Station. An estimated 110 landowners attending two field days and four workshops were introduced to the basics of biomass utilization and the potential for additional income.



**FLORIDA:** In 2008, the Wood to Energy program completed the release of 40 Extension fact sheets and case studies on the use of woody biomass for energy. Also in 2008, an ecological analysis of Tampa’s urban and interface forests was presented in a variety of public agency and citizen venues. The full report and short fact sheets are available at [http://edis.ifas.ufl.edu/document\\_fr265](http://edis.ifas.ufl.edu/document_fr265).



Another interesting project was the creation of a “Sustainable Fishing” program for the Living Green TV series (<http://www.livinggreen.ifas.ufl.edu>). The program was aired by PBS TV stations throughout Florida and the Southeastern United States, with a viewership of more than 16 million people. A DVD was also produced and distributed to Extension agents and interested individuals throughout Florida.

**GEORGIA:** In 2008, the University of Georgia’s Warnell School of Forestry and Natural Resources in cooperation with the Southern Regional Extension Forestry office educated over 275 foresters, loggers, landowners, and county commissioners in the state of Georgia on producing and utilizing woody biomass for energy. Warnell School public service faculty also provided media, natural resource professionals, and general audiences with information, education and programming on water, trees, and drought interactions.



A new center created at the University of Georgia, the Center for Invasive Species and Ecosystem Health, includes Warnell public service faculty. Faculty played a lead role in the invasive species project Early Detection and Distribution Mapping System (EDDMapS). This system provides a more accurate picture of the distribution of invasive species and allows land managers, agencies and others to set priorities for early detection and rapid response, as well as formulate overall invasive plant management action plans. For more information see <http://www.eddmaps.org>

**KENTUCKY:** In 2008, University of Kentucky Extension Forestry assisted in the creation of three additional local forestry organizations.





Professionals with UK Extension Forestry also led the Kentucky Master Logger Program and the newly established Certified Master Logger Program, which trained 1,015 loggers. These professionals also provided leadership in training of forestry professionals in sustainable forest and wildlife management resulting in the improvement of 325,728 acres across the state of Kentucky. In addition, UK Extension provided forest industry with solutions associated with wood processing as well as entrepreneurial assistance to start up wood-based businesses in Kentucky.

Other programs included working with the University of Tennessee to provide regionally relevant materials on hardwood management (available online at <http://www.ukforestry.org> and <http://sref.info/publications>). Wildlife programs developed by UK Extension include programs on urban wildlife management; creating and managing native warm season grasslands; integrating wildlife, damage management, and biodiversity; and ecosystems management. Visit <http://www.uky.edu/Ag/Forestry/TBarnes/> or <http://www.kentuckysnakes.org> for more information).

**LOUISIANA:** In 2008, Louisiana held nine Project Learning Tree workshops for 215 educators. Extension also held four regional forestry forums targeting forest landowners and natural resource managers covering diverse topics such as carbon markets for forest landowners, markets for bioenergy, and ecosystem services. One regional forum attracted more than 300 participants, representing more than one million acres of forestland ownership. Also in 2008, two forest landowner workshops targeting previously underserved landowners attracted 77 participants owning approximately 6,800 acres who had never before attended an Extension workshop.



**MISSISSIPPI:** The Department of Forest Products at Mississippi State University expanded its ability to reach an important clientele group by hiring Dr. David Jones as an Extension Wood Products Specialist. He is the first Extension Specialist ever hired at MSU to specifically address wood products. MSU also hired Dr. Wes Jones, an Extension specialist in the Department of Wildlife and Fisheries.




In the Department of Forestry, specialists produced two new publications, “Mississippi Trees” and “Managing the Family Forest in Mississippi.” Both of these publications were completed in cooperation with the Mississippi Forestry Commission and the US Forest Service (USFS). Another project of interest is the Mississippi Pine Beetle Prevention Program, which has been coordinated through Extension in collaboration with the Mississippi Forestry Commission and the USFS. The program, an education and cost-share program, was continued in 2008 reaching hundreds of landowners with information and assistance needed to mitigate and manage the pine beetle forest health problem in the state.


**NORTH CAROLINA:** Extension Forest Resources Specialists at North Carolina State University received recognition and an award from the Southern Growth Policies Board for their work *North Carolina Woody Biomass*. It was chosen from a strong pool of nominees in the Southern region as an outstanding initiative that encourages economic opportunities relating to bio-products, alternative energy, and energy efficiency. NC Extension Specialists also continued work on a unique Trees and Local Regulations website (<http://www.ces.ncsu.edu/forestry/ordinance/>), and assisted with the launch of a regional




webinar series in cooperation with other land-grant universities, state forestry agencies and other key partners.

Wood Products Extension spent 2008 focusing in on a market development project striving to create end users who will utilize lumber from minor eastern US hardwoods. All 35 states east of the Great Plains have minor species where upper grade lumber is currently being used for lower grade uses. This loss in value negatively affects landowners, industry, and the economy in general. Extension is also determining ways to speed the return of residents to their homes in the wake of natural disasters. This effort is being conducted as the Resilient Home Program, based on results of recent studies, Extension is developing a public-access, web-based portal that contains various resources for making a home natural disaster resilient.

**OKLAHOMA:** In 2008, Oklahoma State Extension had  over 38,000 people attend the Oklahoma Wildlife Expo, and Extension hosted the 2008 National 4-H Wildlife Habitat Evaluation Contest with 18 states in attendance. Oklahoma State University Extension also offered a number of adult education programs including The Stewardship Forest Certification Program, the Master Naturalist Program, and a variety of Field Tours and Demonstrations. OSU also plays a big role in the annual Forestry on the Grow Conference, which is a unique event that is inclusive of all members of the forestry, natural resources, wildlife, and primary and secondary wood using industries.

**SOUTH CAROLINA:** In 2008, Clemson University hired  Dr. Tamara Cushing as the new Extension Forest Management/Economics specialist; she officially began work in 2009. Clemson University Extension professionals also lead the South Carolina Master Naturalist Program. In 2008, six Master Naturalist courses were held, educating 161 people. The program now has 432 volunteers statewide who provide “citizen scientist” service to the community. In addition, Dr. Greg Yarrow was awarded the Alumni Distinguished Cooperative Extension Public Service Award. Wildlife specialists published a number of wildlife articles and information available to homeowners, landowners, naturalists and others.

Other projects included an online guide for landowners interested in creating conservation easements on their lands ([http://www.clemson.edu/cafls/departments/forestry/conservation\\_easements/index.html](http://www.clemson.edu/cafls/departments/forestry/conservation_easements/index.html)) and a second edition of the publication “Stewardship of Longleaf Pines: A Guide for Landowners.” Clemson University also hosted the regional Master Tree Farmer Series in 2008 entitled “Risk and Risk Management” (<http://www.mastertreefarmer.org>).

**TENNESSEE:** In 2008, Tennessee Extension held four  regional Tennessee Healthy Hardwoods (THH) field days and five educational programs on hardwood crop tree release. Following a number of tornados, several workshops were held addressing timber salvage and tax treatment for casualty loss. Forest Products Extension utilized new Google technologies to develop interactive maps of Tennessee primary mills residues production for 2008, a Tennessee Wood Residues Directory, and a Tennessee Forest Products Directory (<http://web.utk.edu/~mtaylo29/>



pages/Google%20Maps.htm). Extension Wildlife and Fisheries faculty continued work on growing and managing successful food plots for wildlife, nuisance wildlife and urban trees for wildlife purposes.

**TEXAS:** In 2008, Texas Agrilife Extension held a number of workshops educating landowners and others about the production and utilization of woody biomass. Specialists also provided education on forestry issues -primarily tax and urban tree care- related to hurricane damage. Texas Extension is also utilizing the Internet extensively for training and education and has created an online professional development website found at <http://cfegroup.org>. This website has the ability to host online learning events and keep track of professional development credits. Texas Agrilife Extension specialists are also working on a national extension project in the area of Forest-based Woody Bioenergy.

**VIRGINIA:** Virginia Cooperative Extension continued providing geospatial support to local governments, state agencies, and other stakeholders across the Commonwealth of Virginia through its Virginia Geospatial Extension Program (VGEP). The Virginia Forest Landowner Education Program (VFLEP) developed a new 9-hour short course called “Forest and Farmland Conservation Strategies” in an effort to help landowners better understand land conservation tools available to them. Virginia also held a series of day-long biomass symposiums.

## REGIONAL CAPACITY TO CONDUCT NATURAL RESOURCE PROGRAMS IN THE SOUTH

States in the South continued to exhibit a strong diversity in the personnel hired to conduct natural resources Extension programming. Figures 1 through 3 summarize the Full Time Equivalents (FTE’s) of these individuals. One FTE is equivalent to one full time person. Oftentimes, faculty and staff time is “split” between one of four functions at the University; teaching, research, Extension and administration. Each forestry unit leader or contact is polled each year to determine FTE’s in major forestry and natural resources areas (excluding fisheries and aquaculture due to the difficulty in some states of obtaining this information). Some of the key points from these graphs include the fact that there are currently over 165 FTE’s in forestry and natural resources in the South; that close to 58% of these FTE’s are faculty in rank with another 20% professional nonfaculty. Also from the graphs, it is evident that there is great diversity across the South with respect to disciplines covered and type of professional appointment.

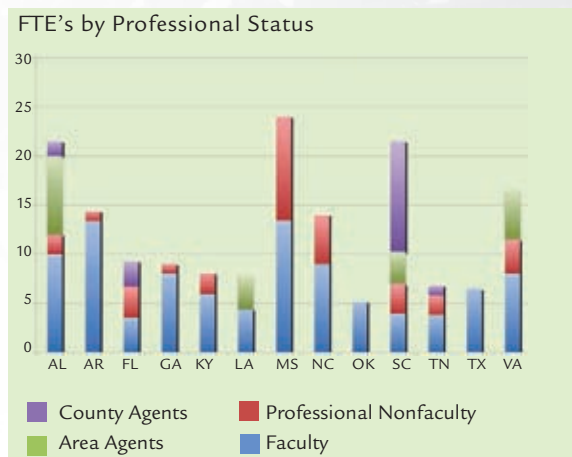


Fig. 1

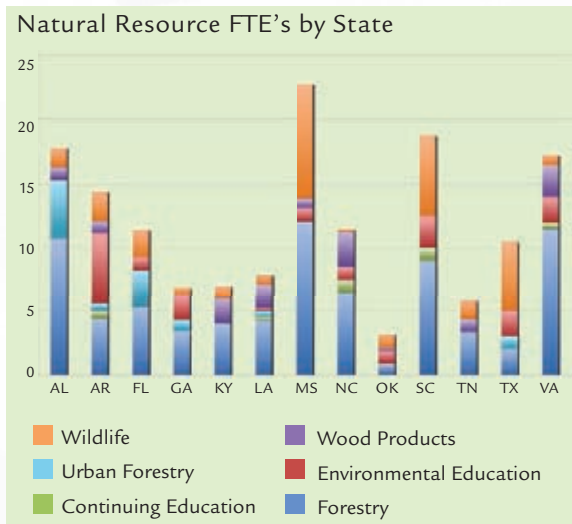


Fig. 2

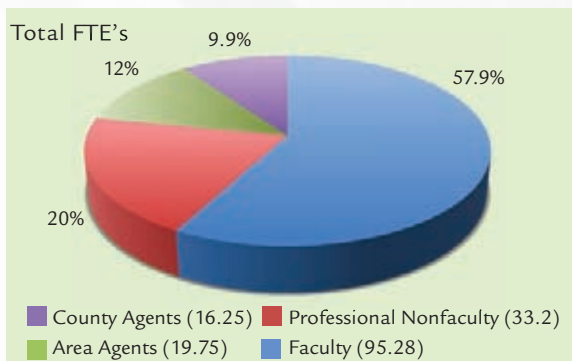


Fig. 3

#### CURRENT INSTITUTIONS SERVED BY THE SOUTHERN REGIONAL EXTENSION FORESTER:

*Auburn University* - Alabama Cooperative Extension System

<http://www.aces.edu/>

*University of Arkansas* - Arkansas Cooperative Extension Service

<http://www.arnatural.org/>

*University of Florida* - Florida Cooperative Extension Service

<http://www.sfrc.ufl.edu/Extension/ExtInfo.html>

*University of Georgia* - Georgia Cooperative Extension Service

<http://www.warnell.uga.edu/>

*University of Kentucky* - Kentucky Cooperative Extension Service

<http://www.ca.uky.edu/forestryextension/>

*Louisiana State University* - Louisiana Cooperative Extension Service

<http://www.lsuagcenter.com/>

*Mississippi State University* - Mississippi Cooperative Extension Service

<http://www.cfr.msstate.edu/cfr/html/extension.htm>

*North Carolina State University* - North Carolina Cooperative Extension Service

<http://www.ces.ncsu.edu/nreos/forest/>

*Oklahoma State University* - Oklahoma Cooperative Extension Service

<http://nrem.okstate.edu/Extension/>

*Clemson University* - Clemson Cooperative Extension Service

[http://www.clemson.edu/extension/natural\\_resources/index.html](http://www.clemson.edu/extension/natural_resources/index.html)

*University of Tennessee* - University of Tennessee Extension

<http://fwf.ag.utk.edu/extension/extension.htm>

*Texas A&M University* - Texas AgriLife Extension Service

<http://texasextension.tamu.edu/>

*Virginia Tech* - Virginia Cooperative Extension

<http://www.ext.vt.edu/>

*USDA Forest Service* - Southern Region State and Private Forestry

<http://www.fs.fed.us/>





## MISSION

To assist professionals in the South who work on issues related to natural resources, especially state Extension forestry and natural resource professionals, with information and tools that facilitate efficient use of their time and resources.

## OVERVIEW

The office of the Southern Regional Extension Forester is unique in its role and position among the numerous organizations that play a part in stewarding our nation's natural resources. We pride ourselves in serving state Extension forestry and natural resources professionals and other key partners to further forest stewardship in the South with innovative information, tools, and programs to meet the numerous challenges they face.

## HISTORY

The position of Southern Regional Extension Forester was created in 1979 to serve as a liaison between the USDA Forest Service and thirteen 1862 Extension forest resource programs in the South. Formally established with a memorandum of understanding (MOU) between the thirteen southern land-grant universities and the USDA Forest Service, this document was

updated in 2000 and serves as the benchmark for judging the performance and effectiveness of the position. The MOU established that the position would be located in Athens, Georgia with secondary office space provided by the USDA Forest Service in Atlanta as needed. The Extension Service Director at the University of Georgia provides immediate supervision for the position and a regional oversight committee representative of critical partners provides input through an annual review.

Since 1979, the duties of the Regional Extension Forester have evolved to include a regional programming, representation, promotion and communication role within the forestry and natural resource communities regionally and nationally.

2008 CURRENT & ONGOING FUNDING		
Project Title	Granting Agency	Amount Received
SREF Administration Grant (salaries and support)	Association of Southern Regional Extension Directors	\$173,089.00
SREF Travel and Support	USDA Forest Service	\$40,000.00
Bioenergy Desktop Guide	National Association of Conservation Districts	\$28,130.00
Urban Forestry Southeast Expo Website	USDA Forest Service	\$24,500.00
Reforestation, Nurseries and Genetics (RNGR) Website and related technology transfer activities	USDA Forest Service	\$45,000.00
Assessing forest resource audiences and technology transfer techniques	USDA Forest Service State and Private, USDA Forest Service Southern Research Station	\$40,000.00
TOTAL \$328,460.00		

Table 1: Current and Ongoing Funding

## GRANTS & CONTRACTS

The day-to-day activities as well as projects carried out in and by the Southern Regional Extension Forestry office are supported from a number of different sources including base funds provided by the Southern Regional Extension Directors and the USDA Forest Service State and Private Forestry. In addition, grants and contracts from other sources are utilized for

various projects that support the mission areas of the Extension Service and Forest Service including regional programming, technology transfer, support to state Extension Services, general information dissemination, science application and other areas. Table 1 provides summarized current and ongoing grants and contracts of the Southern Regional Extension Forestry office.





## PEOPLE

Over the years, SREF has expanded to include a diverse group of hard working individuals who assist the Southern Regional Extension Forester in executing his duties.



**WILLIAM G. HUBBARD**

*Southern Regional Extension Forester*

Bill has served as the Southern Regional Extension Forester since 1993. His position serves to facilitate regional education, extension, and technology transfer programs among thirteen southern land-grant universities, the USDA Forest Service, state forestry agencies, and others within the southern forestry community. Bill received his forestry training at the University of Florida. Before becoming Southern Regional Extension Forester, Bill taught forest management and forest economics at the University of Florida for five years while also managing the Florida Forest Stewardship and Urban Forestry Extension programs at UF.



**MATTHEW HOWELL**

*Information Technology Project Manager*

Matt joined SREF in 2004 after completing a Bachelors of Science degree in Computer Science from the University of Georgia. Matt leads the development of several web-based technology projects including the Reforestation, Nurseries and Genetics Resources website, Urban Forestry South Expo, the Forest Encyclopedia Network or FEN, Eastern Forest Environmental Threats Assessment Center and Forestry Videos. Matt is currently finishing up a Masters of Science in Computer Science. He plans to graduate in December 2009.



**SARAH ASHTON**

*Program Coordinator*

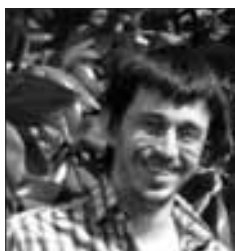
Sarah joined the SREF staff during the summer of 2006 after completing a Masters of Science in Forestry at Virginia Polytechnic Institute and State University. Currently, Sarah is providing leadership in the development of a Woody Biomass Desk Guide and Toolkit for the National Association of Conservation Districts. Sarah also assists the Southern Regional Extension Forester with various regional programs and projects including proceedings editing, participation in regional and national planning efforts and overseeing student work activities. Sarah loves forestry, but would some day love to diversify her skills by managing and owning a goat farm and creamery.





**CANDEE GOLDEN**  
*Administrative Specialist*

Candee has been with the SREF staff since 2006 as an Administrative Specialist and worked for the University of Georgia for five years. Candee's varied background includes work in accounting and purchasing in the restaurant industry, co-owning a contracting business, and being a full-time mom.



**COLE SHERER**  
*Assistant Web Developer*

Cole joined SREF in June 2006 and assists with the development of multiple websites and technologies. Upon finishing his BS in Computer Science at the University of Georgia in May 2007, he started work on his MS.



**CAMILLA GENIATULINA**  
*Graphic Designer*

Camilla joined the SREF staff in March 2008 as a graphic designer. She provides design services for a number of SREF projects. She will complete her BFA in Graphic Design in May 2009.



**DARRYL OUTLAW**  
*Assistant Web Developer*

Darryl has a diverse and extensive background in information technologies. Darryl holds a BS from The University of Tampa in Computer Science and minors in both Accounting and Business Administration. Darryl joined SREF in the first quarter of 2008 and currently works on web site design and development. Previously, Darryl worked for companies such as Computer Associates, CitiStreet and Blue Cross Blue Shield of Florida where he managed, designed, developed and implemented many successful leading edge IT systems.

#### ADDITIONAL ASSISTANTS

The Southern Regional Extension Forestry office would also like to extend thanks and appreciation to the following University of Georgia student assistants who assisted with many tasks throughout the year. These included scanning documents, assisting with projects, filing publications and general office duties in support of regional programs. Particularly, we'd like to thank Shelly Mohammed, Tracey Sheffield, Whitney Howell and Gabby Ferguson.



## PROGRAMS & INITIATIVES

Programs and initiatives with a regional scope are imperative to the success of the Southern Regional Extension Forestry program. These include multi-state and regional projects that are coordinated by individuals, states or agencies that involve the Southern Regional Extension Forestry office in one way or another. In 2008, we continued to build upon several strong programs started in previous years while also expanding this base with new innovative initiatives.



## REGIONAL BIOMASS PROGRAM

In 2008, the Southern Regional Extension Forestry office continued regional leadership on the Sustainable Forestry for Biomass and Bio-based Products Initiative, an innovative educational and technology transfer effort led by the Southern Forest Research Partnership, Southern Regional Extension Forestry office, The University of Georgia, Texas A&M University, the University of Toronto, and the USDA Forest Service. Several fact sheets and case studies were added to the program and all modules from the National Web-based Learning Center were converted to Plone in its final year. Additionally, SREF helped SFRP member institutions implement education and outreach efforts in their respective states.

## NATIONAL ASSOCIATION OF CONSERVATION DISTRICTS (NACD) WOODY BIOMASS DESK GUIDE AND TOOLKIT

<http://www.nacdnet.org/resources/guides/biomass>.

In June 2008, Southern Regional Extension Forestry and the University of Florida received Department of Interior funds through the National Association of Conservation Districts to develop a Woody Biomass Desk Guide and Toolkit. Adapted primarily from existing materials (the Wood to Energy Outreach Program and the Sustainable Forestry for Biomass and Bio-based Products Initiative), the Desk



Guide and Toolkit is national in scope and consists of eight chapters that include reference guide sections with overview information for professionals; sets of fact sheets to be used with the public, local leaders, and landowners; and case studies that illustrate examples, challenges, and successes of woody biomass production and utilization projects. In addition, the guide features a resource section with suggestions for supplementary

materials, FAQs, a glossary of terms, and example community supply curves. NACD published the Desk Guide in May 2009.

## FOREST-BASED BIOENERGY COMMUNITY OF PRACTICE

In the summer of 2008, the Southern Regional Extension Forestry office facilitated the development of a team, led by the University of Georgia and Texas A&M University, that wrote a proposal and was awarded an RREA grant to support the development of an e-Extension Forest-based Bioenergy Community of Practice. An Extension Community of Practice is a virtual network of faculty, professional and para-professional staff, county educators, industry experts and government agency representatives who share knowledge or competence in a specific content area and who are willing to work together over an extended period of time. The CoP shares knowledge gained in the form of educational products, programs and electronic interactions with individuals interested in the particular subject matter (Community of Interest). The purpose of the FBB CoP is to 1) assess the current state of the industry; 2) assist with the complex dissemination of forest-based bioenergy and bio-products information; 3) create and maintain the primary system that will continuously track new advancements and information; and 4) support the needs of individual producers and users as well as local, state, regional and national resource planning professionals. Both the Southern Regional Extension Forester and his program coordinator sit on the Core Leadership Team of the FBB-CoP.

## MASTER TREE FARMER

<http://www.mastertreefarmer.net>

The Master Tree Farmer continued in 2008 with the development and delivery of a 3-week course entitled “Risk

Management in Your Forest”. Clemson University and the Southern Regional Extension Forestry office provided regional leadership for this satellite-based program. Presentations included:

- The changing landscape in the South: What it means for the private forest owner.
- Introduction to risk and risk management.
- Risk and landowner objectives—understanding the connection.
- Wind, fire, drought and ice—examples and management/mitigation advice.
- Global climate change and volatility—what this means for forest landowners.
- Invasive plants.
- Insects and diseases (exotic and native).
- Control issues (cost-share technical assistance, cooperative agreements, etc).
- Trespass, timber theft and contracts, boundary marking, liability, etc.
- Regulations and right to practice forestry laws
- Federal and state taxes and risk.
- What are a landowner’s next steps for managing risk on his/her forest.
- Making a difference—the importance of getting involved and active in the forestry community.

Several hundred landowners and natural resource professionals participated in the program throughout the South. In addition, DVD’s and online versions of the presentations are available on their website and at <http://www.forestryvideos.net>.

**SOUTHERN WILDLAND-URBAN INTERFACE COUNCIL**  
<http://www.interfacesouth.net>.

The Regional Extension Forester represents Cooperative

Extension as a member of the Southern Wildland-Urban Interface Council. The Council, which is composed of members from state forest agencies, the USDA Forest Service, academia, Cooperative Extension, and non-government organizations, supports the leadership of the Southern Group of State Foresters by identifying and addressing wildland-urban interface issues. The Council also serves as the official advisory group of the Southern Center for Wildland-Urban Interface Research and Information in Gainesville, Florida by guiding technology transfer activities and identifying research needs. In 2008, the USDA Forest Service hired a technology transfer specialist, Nicole Wulff, to assist with the implementation of *Changing Roles*. The SREF office, in addition to hosting and maintaining the WUI Center’s website, is working closely with Ms. Wulff to coordinate Extension’s involvement in the delivery of these valuable training materials.

**URBAN FORESTRY SOUTH**  
<http://www.urbanforestrysouth.org>

The Southern Regional Extension Forestry office also assists state level urban and community forestry specialists with both state agencies and state Extension Services. This includes coordination with regional urban and community forestry experts on regional needs assessments, website design and development, and other efforts.

**FORESTRY AND NATURAL RESOURCE WEBINAR SERIES**  
<http://www.forestrywebinar.net>

The Southern Forestry & Natural Resources Webinar Series Portal is a service of the Southern Regional Extension Forestry office, North Carolina State University’s Extension Forest Resources, Texas Agrilife Extension and other participating land-grant universities in the South. The term



webinar is short for “web-based seminar.” These seminars can be on any topic, of any length and for any audience. While most webinars are designed for live audiences, many can be archived or saved for future viewing. This portal will serve as a launching point for current and archived forestry and natural resource webinars. This site will also host information on upcoming webinars hosted via this initiative as well as relevant webinars from other organizations. More detailed information can be found at their website.

#### REGIONAL PUBLICATION SERIES

<http://www.sref.info/regionalpublications>

The Southern Regional Extension Forestry office continued the Southern Regional Extension Forest Resources Publication Series in 2008. This is a peer-reviewed online publication system of the Cooperative Extension Service- Southern Region. The series seeks to expand the distribution of state-level Extension publications and encourages the development of new, regionally authored Extension and technology transfer publications that address regional issues and audiences. The series is housed online at <http://www.sref.info> in a print-on-demand format and holds a regional numbering system along with a regional logo. Materials are submitted in an electronic format and are subject to a peer review process that involves a primary topic associate editor and two independent reviewers. In addition, all unit leaders are offered an opportunity to comment on its geographic applicability. More detailed information on the series is available on their website.

Several new publications have been peer reviewed and published online at <http://www.sref.info/regionalpublications/> including:

- *City Tree Inventory: The Experience of a Small Town* (SREF-UF-001)
- *Practicing Forestry Under Local Regulations: A Guide for Landowners* (SREF-FM-013)
- *Technical Guide to Crop Tree Release in Hardwood Forests* (SREF-FM-011)

Other regional peer reviewed publications are in various stages of review and publication.



#### FORESTRY AND NATURAL RESOURCE VIDEOS

<http://www.forestryvideos.net>

Over the years the SREF office has collected hundreds of VHS and DVD videos from around the U.S., many of which were produced by Extension programs for educational purposes. In 2006, the SREF staff completed the task of digitizing and cataloging all of the VHS videos in their library. Since the SREF office frequently receives additions to their library, this project will continue indefinitely. In 2007, SREF experimented with putting several of these videos online in various formats, sizes and resolutions. In 2008, the SREF office began uploading these videos to the website. Several hundred videos with brief descriptions are now online in the following categories:

- Urban forestry and arboriculture
- Timber harvesting, logging and logger education
- General forestland management
- Wood products and preservation
- Environmental
- Wildlife
- Youth
- Others

**THE SOUTHERN REGIONAL EXTENSION FORESTRY  
WEBSITE, LISTSERV AND MONTHLY NEWSLETTER**  
<http://www.sref.info>

The Regional Extension Forester communicates timely information related to forestry in the South as well as nationally through his regional website. The site, redesigned in 2008 to be more functional, is home to thousands of news items, video links, podcast links, newsletters, citations, events, and personnel announcements that can be accessed with just the click of a mouse. Registered users of the site can receive an electronic newsletter distributed the first week of each month that summarizes the news from around the region. Be sure to join and bookmark <http://www.sref.info> for all of your forestry information needs.

**JOINT MEETING OF THE SOUTHERN REGION EXTENSION  
UNIT LEADERS AND THE SGSF MANAGEMENT CHIEFS**

In late 2008, the first joint meeting of the Southern Region Extension Unit Leaders and the Southern Group of State Foresters Management Chiefs was held in Athens, GA at the Warnell School of Forestry and Natural Resources' Whitehall School Forest. The Southern Regional Extension Forester proposed this joint meeting after recognizing that many of the two groups' interests and responsibilities overlap. In addition, the SREF recognized that there may be some educational, professional development, and grant writing opportunities forgone by the two groups not meeting jointly. The three-day meeting met with tremendous success. The first day included a number of program and initiative updates. The second day, each group met separately, and the

third day a facilitated session was held to identify collaboration opportunities. Results included:

- The agreement to work together on an official "education" Memorandum of Understanding between the Southern Group of State Foresters and the Southern Regional Extension Foresters.
- The agreement to move forward with professional development opportunities through the Internet and primarily via webinars designed for county/parish foresters and county agents.
- The agreement to move forward on a regional urban and absentee landowner education initiative.

**2006 SOUTHERN REGION CONFERENCE ON TECHNOLOGY  
TRANSFER AND EXTENSION IN NATURAL RESOURCES  
PROCEEDINGS (UPDATE)**

SREF continued work on the 2006 Southern Region Conference on Technology Transfer and Extension in Natural Resources Proceedings. In 2008, all manuscripts were reviewed, revised, and finalized. A compiled proceedings manuscript was sent to the USFS Southern Research Station for style, edit, and publishing. The conference proceedings are expected to be published as a General Technical Report (GTR) in mid 2009.





### REGIONAL EXTENSION FORESTER AWARD

Each year the Regional Extension Forester solicits nominations from around the region for consideration for the Southern Regional Extension Forestry Awards Program. This Program, a precursor to the national ANREP awards program, follows a peer review by fellow Extension professionals. Results are shared with the forestry community and posted online at <http://www.sref.info> when they become available.



## PRODUCTS & TECHNOLOGY

During 2008, SREF continued to build upon existing relationships and developed new partnerships to create several products to serve the educational and communication communities at the regional, national and global level. The style and approach of these products vary widely from published articles, fact sheets, and brochures to complex Internet applications.

## INTERNET APPLICATIONS

One of the continuing success stories with the Southern Regional Extension Forestry office is the Internet technology currently under development and management. Each of these websites meets the needs of a number of audiences. The following section highlights our current projects along with the collaborators or partners who are assisting with the effort, the audiences that the site is designed for, a general description of the website, accomplishments for 2008, plans for 2009, and any website statistics and impact data that might have been collected.



SREF

### SOUTHERN REGIONAL EXTENSION FORESTRY

<http://www.sref.info>

The Southern Regional Extension Forester communicates timely information related to forestry in the South and nation through this regional website. The site is home to thousands of news items, video links, podcast links, newsletters, citations, access to print publications, web publications, events, and people and personnel announcements that can be accessed with just the click of a mouse. Registered users of the site can receive an electronic newsletter distributed the first week of the month that summarizes the news from around the region. Be sure to join and bookmark <http://www.sref.info> for all your forestry information needs.

### URBAN FORESTRY SOUTH EXPO

<http://www.urbanforestrysouth.org>

**About:** The Urban Forestry South Expo is a central database of knowledge, information, and resources in the urban forestry arena. It uses a content management system and portal technology to organize a large amount



Urban Forestry South Expo

of urban and community forestry related information. The site includes:

- urban forestry technology bulletins.
- tree ordinances.
- news articles related to urban and community forestry.
- urban and community forestry links.

**Intended Audience:** State urban forestry coordinators, Extension professionals, urban forestry students, city planners, and others involved in urban forestry and development.

**Collaborators/Partners:** USDA Forest Service and SREF.

**2008 Activities and Accomplishments:** This site is currently being maintained and administered by SREF staff. Several updates and enhancements were made to the site in 2008 including streamlining information delivery and an improved server for faster access to information. RSS Feeds were added for all content sections, including the publication library, events and position announcements, enabling easy content sharing. A blog was also added that includes frequent updates about pertinent urban forestry information, such as ice storms. The editing interface was revamped and attributes were reorganized, minimizing the time new administrators need to learn the system.

**2009 Plans:** Several activities are planned for 2009, including the development of an online management plan development tool to assist professionals and a fire performance plant selector web site to assist in the selection of firewise plant species. The Urban Forest Strike Team website ([www.ufst.org](http://www.ufst.org)) will continue to be expanded to include more disaster response information. A content reusing system will be developed



that will allow for content sharing between Urban Forestry South Expo, its sub-sites, and InterfaceSouth.

**Website Statistics:** During 2008, Urban Forestry South Expo had approximately 165,000 page views from 174 countries. The Publications library was the most popular section, having almost half of the total page views. Search engines index the site very well, and therefore almost 80% of the total page views come from search engine search results like Google.

#### INTERFACESOUTH

<http://www.interfacesouth.org>

**About:** InterfaceSouth is the component of the USDA Forest Service, Centers for Urban and Interface Forestry (CUIF), that focuses on wildland-urban interface (WUI) issues. The InterfaceSouth website is dedicated to heightening awareness of and providing information about WUI issues. The site includes up-to-date WUI information, such as current news, events, publications, training and outreach programs, and decision support systems. It also includes reference information such as a literature database, photo gallery, training materials, and links to other informative websites. The site also allows you to sign up for the Southern Wildland-Urban Interface Network (SWUINET) listserv, through which you can receive the InterfaceSouth Update, InterfaceSouth Post, and the CUIF quarterly bulletin.

**Collaborators/Partners:** USDA Forest Service and SREF.

**2008 Activities and Accomplishments:** In 2008, IT professionals from the Southern Regional Extension Forestry office established a renewed relationship with the Center. For the past several years, the website had been managed via contract with an individual. In

2008, administrators made the decision to use the SREF office for its InterfaceSouth Internet delivery needs. A first major step was the recovery of the data and site following a catastrophic system crash. SREF IT personnel spent many hours recovering the data and site. Today it is a valuable, functioning website receiving heavy traffic and use.

**2009 Plans:** Throughout 2009, the site will be expanded with additional sections. The “Changing Roles” section will feature a training materials upload section that will allow users to share valuable training materials. The Spanish translation of all content will be completed, and a content-sharing system will be developed that will allow InterfaceSouth to share its content with Urban Forestry South Expo and other relevant sites.

**Website Statistics:** In 2008, the site received over 45,000 page views. Most page views were made to the Wood to Energy project, a training project aimed at increasing community understanding and discussion about the possibility of using wood for energy in the South.

#### FOREST ENCYCLOPEDIA NETWORK

<http://www.forestencyclopedia.net>

**About:** The Forest Encyclopedia Network (FEN) provides natural resource professionals and the public the scientific knowledge and tools they need to achieve their objectives. The Network is designed to connect scientific results, conclusions, and impacts with management needs and issues. The ever-expanding scientific knowledge base of forest information is organized into an integrated system that can be easily accessed and used. FEN currently contains the following six encyclopedias:



InterfaceSouth



Forest Encyclopedia Network

- Encyclopedia of Southern Appalachian Forest Ecosystems
- Encyclopedia of Southern Fire Science
- Encyclopedia of Southern Forest Science
- Encyclopedia of Southern Bioenergy Resources
- Encyclopedia of Forest Environmental Threats
- Encyclopedia of the Southern Pine Beetle

**Intended Audience:** Natural resource professionals, fellow scientists, landowners, students, and others interested in management and scientific aspects of our Southern forests.

**Collaborators/Partners:** USDA Forest Service, Southern Research Station.

**2008 Activities and Accomplishments:** During 2008, SREF continued to add new content by using the batch content importation tool, created previously, to import new content including over 40 new case studies which were added to the Encyclopedia of Forest Environmental Threats. SREF also fixed syntax and linkage problems of other pages. SREF worked closely with Google to ensure that all pages were indexed and ranked highly.

**2009 Plans:** During 2009, SREF will continue to improve and maintain this site. New content will be added on an as needed basis.

**Website Statistics:** In 2008, the Forest Encyclopedia had over 95,000 visits and 260,000 page views from 182 different countries. The page views were to over 40,000 different pages, citations, images and tables. The most popular pages contained general information about forest threats, biomass, fire effects, and forest science.

#### HUMAN AND NATURAL SYSTEMS

<http://www.humanandnaturalsystems.org>

**About:** SRS-4952 is a research work unit of the Southern

Research Station. This work unit is composed of ten employees spread out over two locations – five in Athens, Georgia and five in Gainesville, Florida. The Human and Natural Systems unit also works closely with the Region 8 Urban Forester in State & Private Forestry, located in Atlanta, GA. The Human and Natural Systems research program seeks to improve the understanding of how people living in urban and urbanizing landscapes both influence and are influenced by natural environments. The technology transfer center's aim to develop and communicate guidelines, models, and tools for natural resource professionals, policymakers, planners and citizens.

**Collaborators/Partners:** USDA Forest Service, Southern Research Station and SREF.

**2008 Activities and Accomplishments:** The SRS-4952 website was developed and launched in late 2008. The site is an umbrella website for both Urban Forestry South Expo and InterfaceSouth. The site contains information on current research projects, technology transfer efforts and valuable products. Most of this content is taken from key materials found on the two centers' websites.

**2009 Plans:** While launched, this website is still undergoing development and many plans are in place for 2009. A content-sharing mechanism will allow content from Urban Forestry South Expo and InterfaceSouth to be seamlessly displayed on the site. Criteria for new and important content will be gathered and this information will allow the system to automatically obtain content from many relevant websites.

#### URBAN FOREST STRIKE TEAM

<http://www.ufst.org>

**About:** The Urban Forest Strike Team provides resources to support Urban Forest Strike Teams in the Southern



Human and Natural Systems

United States. The site includes:

- Risk assessment materials.
- FEMA disaster declarations.
- Online ICS training and forms.
- GIS data and tools.

**Intended Audience:** Urban Forest Strike Teams, Arborists and others involved in urban forestry and disaster management.

**Collaborators/Partners:** USDA Forest Service, Southern Research Station and SREF.

**2008 Activities and Accomplishments:** SREF developed this site in mid-2008 and provided an easy access interface for administrators to add and edit site content. The site is currently in the maintenance process.

**2009 Plans:** During 2009, SREF will continue to improve and maintain this site. RSS feed functionality will be developed which enables easy content sharing.

**Website Statistics:** For the second half of 2008, this site had over 10,000 page views and the majority of these views were in the resources section, which includes files, photos and blogs.

**ASSOCIATION OF NATURAL RESOURCE EXTENSION PROFESSIONALS** <http://www.anrep.org>

**About:** The Association of Natural Resource Extension Professionals (ANREP) is a national, professional association for Cooperative Extension Service (CES) professionals working in environmental education, fisheries, forestry, wood sciences, range, recreation, waste management, water, wildlife, and related disciplines. Members are active and retired CES employees at the county, area, state, or national level. ANREP strives to bring professionals together

to discuss mutual natural resource issues, needs, and opportunities. The website provides members and nonmembers with news articles, event information, position announcements, a member directory, membership information, and association contact information.

**Intended Audience:** Active and retired county, area, state, and national level cooperative Extension Service (CES) professionals working in environmental education, fisheries, forestry, wood sciences, range, recreation, waste management, water, wildlife, and related disciplines.

**Collaborators/Partners:** Joint Council of Extension Professionals (JCEP), ANREP, SREF.

**2008 Activities and Accomplishments:** Major development on this site is complete and the site undergoes routine maintenance. During 2008, SREF staff added extensive documentation on past ANREP conferences, committees and their functions, and information about ANREP's history. A sub-section for the 2010 ANREP conference was also developed.

**2009 Plans:** In 2009, SREF will add online payments functionality, so new members as well as renewing members can register and pay dues online. A new section for webinars will be added. An online awards nomination and review system will be developed that will greatly improve the previous system and reduce the cost involved with the process. SREF will also restructure the menu hierarchy to improve navigation and accessibility.

**Website Statistics:** In 2008, this site had almost 75,000 page views and 20,000 visits from 130 countries. The majority of page views came from visits to the



Urban Forest Strike Team



ANREP



conference website and searching the membership directory.

**REFORESTATION, NURSERIES, AND GENETICS RESOURCES (RNGR)** <http://www.rngr.net>

**About:** The Reforestation, Nurseries, and Genetics Resources (RNGR) website was developed by technical specialists of the Reforestation, Nurseries and Genetic Resources program whose mission is to supply people who grow forest and conservation seedlings with the very latest technical information. It was also developed to provide links to other organizations and individuals with similar interests. As you browse through the website, you should learn more about the art and science of raising forest and conservation plants. Site features include:

- Publications.
- Forums.
- Contacts.
- Grant opportunities.
- Information related to ongoing research projects.
- 70 Years of National Nursery Proceedings Archives.
- Thin Green Line symposium proceedings.

**Intended Audience:** Professionals, students, scientists, nursery specialists, and teachers.

**Collaborators/Partners:** USDA Forest Service RNGR National Team, SREF.

**2008 Activities and Accomplishments:** In 2008, thirty editions of tree improvement conference proceedings were scanned and added to the site, including the Northeastern, North Central, Lake States, and Central States Tree Improvement conferences. Major work was undertaken to improve the speed of the site by aggressively caching pages and searches. The Native Plants Providers directory, which creates a listing of

providers throughout the United States and Canada, underwent speed and formatting improvements to minimize editing.

**2009 Plans:** During 2009, RNGR will be redesigned and restructured to improve speed and the indexing of content. The new design will be crisp and will promote an easy to use interface. RSS feeds of new publications will be added to improve content sharing and reuse. All PDFs on the site will be indexed by the site search to improve search results. Proceedings from tree improvement conferences, Forest Nursery Notes, Tree Planters' Notes, and other relevant material will continue to be scanned and indexed.

**Website Statistics:** In 2008, the site had over 217,000 page views from 182 countries. The expansive publications section has over half of these page views. The most popular publications were the Container Tree Nursery Manual, Forest Nursery Notes, the Tropical Tree Seed Manual and Tree Planters' Notes. Over 40,000 PDFs were downloaded from the publications section during 2008.

**EASTERN FOREST THREAT CENTER**  
<http://www.forestthreats.org>

**About:** The mission of the Eastern Forest Environmental Threat Assessment Center is to generate, integrate, and apply knowledge to predict, detect, and assess environmental threats to public and private forests of the East, and to deliver this knowledge to managers in ways that are timely, useful, and user friendly. The Eastern Forest Environmental Threat Assessment Center website provides the latest research and expertise on forest threats. Site features include: data, interactive tools, project information, news, events information and abiotic and biotic threat information.



*Reforestation, Nurseries, and Genetics Resources*



*Eastern Forest Threat Center*

**Intended Audience:** Land managers, scientists, and landowners.

**Collaborators/Partners:** USDA Forest Service, SREF, National Environmental Modeling and Analysis Center.

**2008 Activities and Accomplishments:** This site is currently being maintained and administered by SREF staff. Changes to the site are made on an as needed basis. In 2008, a featured forest threat section was added to highlight forest threat on a weekly basis.

**2009 Plans:** During 2009, SREF will continue to improve and maintain this site. An RSS feed aggregator will be developed to pull in and display forest threats information from related websites.

**Website Statistics:** The site had over 17,000 visits and 70,000 page views. The most popular section contained information about upcoming events and forest threats related newsletters.

**FORESTRY AND NATURAL RESOURCE VIDEOS**  
<http://www.forestryvideos.net>

For more information about this website, view page 20

**2008 Activities and Accomplishments:** This site was developed and released in 3rd quarter 2008. Over 300 videos were placed on the site in QuickTime streaming format and for direct download. These videos are searchable by keywords and categories.

**2009 Plans:** During 2009, new videos will be added to the site. Any requests for additions to the site are welcome. New series options will make related videos easier to find. The ability to host YouTube™ videos will be added as well as the ability to host Flash Video natively on the site.

**Website Statistics:** For the 4th quarter of 2008, the site had 10,000 page views, and we have seen a steady rise

in views ever since. Videos have been watched in over 100 countries.

**FORESTRY AND NATURAL RESOURCE WEBINAR PORTAL**  
<http://www.forestrywebinar.com>

For more information about this website, view page 20

**2008 Activities and Accomplishments:** This site started development in late 4th quarter 2008 and will be released in early 2009.

**2009 Plans:** In 2009, the site was released and quickly gained popularity. Throughout the rest of 2009, SREF will continue to improve the site and add features. A closer integration with multiple backend webinar hosting solutions has been proposed to improve user experience in the case of network failures or other unforeseen issues.

**Website Statistics:** In the 1<sup>st</sup> quarter of 2009, the site had over 16,000 page views from over 40 countries. At this point, the most popular webinar, in terms of page views, has been “Getting the Attention of Family Forest Owners: Lessons from Social Marketing Research” given by Dr. Brett Butler.

**AMERICA’S LONGLEAF**  
<http://www.americaslongleaf.org>

**About:** The vision of America’s Longleaf Initiative is to have functional, viable longleaf pine ecosystems with the full spectrum of ecological, economic and social values inspired through a voluntary partnership of concerned, motivated organizations and individuals. America’s Longleaf Initiative is a voluntary collaborative effort that seeks to define, catalyze and support coordinated conservation efforts.

**Intended Audience:** Forest landowners



Forestry and Natural Resource Videos



Forestry and Natural Resource Webinar Portal



America's Longleaf





International Institute of Tropical Forestry



Forest Productivity Homepage

**2008 Activities and Accomplishments:** SREF created America's Longleaf, populated it with relevant content to highlight and increase awareness of the initiative and released the site in the 4<sup>th</sup> quarter of 2008.

**2009 Plans:** SREF will redesign the site and add more content related to the Longleaf Restoration Initiative. A backend project management tool will be developed to help increase awareness of the initiative.

**INTERNATIONAL INSTITUTE OF TROPICAL FORESTRY**  
<http://www.tropicalforestry.net>

**About:** The International Institute of Tropical Forestry (IITF) site aims for the dissemination of the knowledge and resources developed by IITF critical to sustaining tropical ecosystems beneficial for humankind worldwide. Some features include:

- A database of tropical forestry projects, products and publications.
- A directory of tropical forestry scientists, collaborators and staff.
- An immense International Programs photo gallery.
- A collection of tropical forestry news, events, links and job opportunities.

**Collaborators/Partners:** USDA Forest Service-- International Institute of Tropical Forestry

**Intended audience:** Researchers and scientists, students, and others interested in understanding, maintaining and restoring tropical forests and ecosystems.

**2008 Activities and Accomplishments:** This site is currently being maintained and administered by SREF staff. Changes to the site are made on an as needed basis.

**2009 Plans:** In 2009, SREF plans to upgrade the site to reflect the needs of the staff at IITF and visitors to the site.

**Website Statistics:** During 2008, the site received over 13,000 page views from over 100 countries. The research section of the site received the most views.

**FOREST PRODUCTIVITY WEBSITE**  
<http://www.forestproductivity.net>

**About:** Released in 2005, the Forest Productivity website was created to provide site visitors and forestland managers with the most current, unbiased, science-based, forest productivity information available in support of best management decisions for forestlands. With applied research articles, how-to's, and technology updates, you can find information on subject areas such as site preparation, genetics, planting, fertilization, herbicides, and economics as they relate to forest productivity. A key objective of the website is that natural resource managers will be enabled and equipped to make better, cost-effective forest management decisions to optimize forest productivity.

**Intended Audience:** Private non-industrial forest landowners (NIPFLs), forestry consultants, state and federal foresters, natural resource managers, Extension agents, and other interested persons.

**Collaborators/Partners:** The University of Georgia, the Potash & Phosphate Institute, the Foundation for Agronomic Research, SREF.

**2008 Activities and Accomplishments:** This site is currently being maintained and administered by SREF staff. Changes to the site are made on an as needed basis.

**2009 Plans:** In 2009, SREF will continue to host the site and provide upgrades as necessary.

**CARBON TRADING : A PRIMER FOR FOREST LANDOWNERS** <http://carbon.sref.info>

**About:** The Carbon Trading: A Primer for Forest Landowners website provides information regarding what is required by a landowner to trade carbon, possible costs, and potential income. It also provides information on where US states are in the process of developing markets. Site features include: carbon trading information, a carbon calculator, maps, links, and contacts.

**Intended Audience:** Forest landowners, natural resource professionals, carbon traders, scientists, and students.

**Collaborators/Partners:** National Commission on Science for Sustainable Forestry, Daniel B. Warnell School of Forestry and Natural Resources-UGA, SREF.

**2008 Activities and Accomplishments:** This site is currently being maintained and administered by SREF staff. Changes to the site are made on an as needed basis.

**2009 Plans:** In 2009, SREF will continue to host the site and provide upgrades as necessary.

**Website Statistics:** During 2008, the site received over 30,000 page views with the majority of views coming from the carbon estimation feature.

#### FOREST BIOENERGY

<http://www.forestbioenergy.net>

**About:** The Forest Bioenergy website is one of several products resulting from the Southern Forest Research Partnership bioenergy training initiative. The site is a repository of information related to biomass product

use designed such that members can easily upload and the public can easily download relevant biomass-related information. Site features include: biomass related news, links, events, images, publications, presentations, and a glossary.

**Intended Audience:** Natural resource management, Extension, and community planning and development professionals and others interested in forest bioenergy.

**Collaborators/Partners:** Southern Forest Research Partnership, Daniel B. Warnell School of Forestry and Natural Resources-UGA, Texas A&M University, The National Learning Center for Private Forest and Range Landowners, University of Tennessee and University of Toronto, SREF.

**2008 Activities and Accomplishments:** This site is currently being maintained and administered by SREF staff. Changes to the site are made on an as needed basis.

**2009 Plans:** SREF will continue to manage the site and add new content.

**Website Statistics:** In 2008, Forest Bioenergy had over 32,000 page views with the majority of views being images, training materials, events and presentations.

#### GEORGIA GROWS

<http://www.gagrows.com>

**About:** Georgia Grows is a new approach to the goal of planning and caring for Georgia forestland. Members exchange ideas on how to manage this resource more effectively in Georgia. GROWS also recognizes those owners and managers who manage it best. Together, Georgia landowners can touch future generations through managing forests wisely today. Site features include: news, events, relevant publications and links, and a photo gallery.



Carbon Trading: A Primer for Forest Landowners



Forest Bioenergy





Georgia GROWS



Caring for Deer and Forests

**Intended Audience:** Individuals or organizations having an interest in Georgia's forests.

**Collaborators/Partners:** Georgia Forestry Commission, SREF, USDA Forest Service, Daniel B. Warnell School of Forestry and Natural Resources-UGA, Georgia Department of Natural Resources, USDA Natural Resource Conservation Service, National Wild Turkey Federation, Quality Deer Management Association, Georgia Forestry Association, Georgia Land Conservation Program

**2008 Activities and Accomplishments:** This site is currently being maintained and administered by SREF staff. Changes to the site are made on an as needed basis.

**2009 Plans:** SREF will continue to maintain and improve the site and a collection of Forest Stewardship fact sheets will be added.

**Website Statistics:** During 2008, the site had almost 7,000 page views from 25 countries.

**CARING FOR DEER AND FORESTS**  
<http://www.deerandforests.org>

**About:** The Caring for Deer and Forests website was developed by a team of scientists and Extension educators with input from a broad-based advisory team, and funding from the USDA Forest Service Electronic Commons project and Northern Initiatives. The site is maintained by the University of Georgia, Penn State University, and US Forest Service Research & Development Northern Station. The site's two main goals are: (1) to provide information and examples about deer habitat, deer impact, and strategies to care for deer and forests together; and (2) to serve as a clearinghouse for resources about connections among people, deer, and forests. Site features include:

introductory information on deer and forests, resources, case studies, relevant links, publications, videos, and contacts.

**Intended Audience:** Landowners, hunters, media writers, WUI landowners, natural resource professionals.

**Collaborators/Partners:** USDA Forest Service, Penn State University, SREF.

**2008 Activities and Accomplishments:** This site is currently being maintained and administered by SREF staff. Changes to the site are made on an as needed basis.

**2009 Plans:** SREF will improve the Deer browsing habitat tutorial by removing text boxes covering the habitat examples so viewers can get a clear view of different levels of deer browsing and its effects on the forest. New videos and publications will be added.

**Website Statistics:** In 2008, Caring for deer and Forests had over 6,500 visits and 20,000 page views. Over 40% of the total views to the site were to the collection of related resources.

## Website Statistics

Website Name	URL	Visits	Unique Visitors	Page Views
America's Longleaf	<a href="http://www.americaslongleaf.org">http://www.americaslongleaf.org</a>	245	170	1,247
ANREP	<a href="http://www.anrep.org">http://www.anrep.org</a>	19,773	14,724	74,983
Carbon Trading	<a href="http://www.carbon.sref.info">http://www.carbon.sref.info</a>	10,578	8,795	31,513
Caring for Deer and Forests	<a href="http://www.deerandforests.org">http://www.deerandforests.org</a>	6,685	6,040	20,108
Forest Encyclopedia Network	<a href="http://www.forestencyclopedia.net">http://www.forestencyclopedia.net</a>	95,142	83,263	262,681
Forest Bioenergy	<a href="http://www.forestbioenergy.net">http://www.forestbioenergy.net</a>	5,839	4,588	32,600
Forest Index	<a href="http://www.forestryindex.net">http://www.forestryindex.net</a>	5,016	4,588	32,600
Forestry Videos	<a href="http://www.forestryvideos.net">http://www.forestryvideos.net</a>	2,064	1,515	9,619
Forest Landowners Association	<a href="http://www.forestlandowners.com">http://www.forestlandowners.com</a>	31,727	24,499	109,119
Eastern Forest Environmental Threats Assessment Center	<a href="http://www.forestthreats.org">http://www.forestthreats.org</a>	17,719	12,252	71,792
Georgia GROWS	<a href="http://www.gagrows.com">http://www.gagrows.com</a>	1,234	1,070	6,594
Georgia Urban Forest Council	<a href="http://www.gufc.org">http://www.gufc.org</a>	6,943	5,538	19,438
Human and Natural Systems	<a href="http://www.humanandnaturalsystems.org">http://www.humanandnaturalsystems.org</a>	151	68	2,508
InterfaceSouth	<a href="http://www.interfacesouth.org">http://www.interfacesouth.org</a>	6,396	4,758	34,214
International Institute of Tropical Forestry	<a href="http://www.tropicalforestry.net">http://www.tropicalforestry.net</a>	2,552	1,962	13,070
RNGR	<a href="http://www.rngr.net">http://www.rngr.net</a>	44,281	34,963	217,827
RREA Programs	<a href="http://www.rreaprograms.net">http://www.rreaprograms.net</a>	306	249	989
Southern Appalachian Ecosystem Restoration Forum	<a href="http://www.saerf.net">http://www.saerf.net</a>	194	110	859
Southern Forest Research Partnership	<a href="http://www.sfrp-online.net">http://www.sfrp-online.net</a>	1,324	1,173	4,217
Southern Regional Extension Forestry	<a href="http://www.sref.info">http://www.sref.info</a>	41,880	34,727	97,971
Urban Forestry South Expo	<a href="http://www.urbanforestrysouth.org">http://www.urbanforestrysouth.org</a>	71,649	62,518	164,169
Urban Forest Strike Teams	<a href="http://www.ufst.org">http://www.ufst.org</a>	1,128	702	10,085
Wildfire Programs	<a href="http://www.wildfireprograms.usda.gov">http://www.wildfireprograms.usda.gov</a>	11,847	10,195	32,155
TOTAL		384,673	318,409	1,230,736

## PROMOTIONAL MATERIALS, EXHIBITS & POSTERS

The SREF office developed or updated the following promotional materials in 2008:

- Small woodlot management brochure—SREF worked with Virginia Cooperative Extension to design a tri-fold, educational brochure outlining the importance and potential benefits of small woodlot management. This brochure was designed specifically for the green industry to hand out to current and potential customers.
- SREF booth display background – In late 2008, SREF staff began development of a new background display for the floor-length display often used at conferences and trade-shows. We hope to get out to a number of conferences, conventions, and symposiums in 2009 with our new look!



Brochure Front

Brochure Back

Five Panel Booth Display





## PRESENTATIONS AND COMMITTEE WORK

It is important for the staff of the Southern Regional Extension Forestry office to be engaged on a variety of fronts at the regional and national level. This includes participation on several committees, presentations to local, state, regional and national audiences, and other activities designed to provide service to our communities and gather feedback from the field. The Southern Regional Extension Forestry staff gain much value from these activities and assignments.

## PRESENTATIONS & COMMITTEE WORK

The Southern Regional Extension Forester and staff participated on numerous committees, provided presentations at several meetings and undertook a number of special assignments. These activities were important for many reasons including representation of Extension and the Land Grant University mission, promotion of Extension and education as solutions to today's natural resource issues, and summaries of SREF programs, activities and contributions in the natural resources arena. A short summary of some of the major committee accomplishments and special assignments follow.

### *Southern Alliance for the Utilization of the Biomass Resource (SAUBR)*

The SREF is a board member and regularly participates in board activities and decisions. This Alliance was formed to promote the use of woody biomass for energy and other products in the Southern United States. The SREF office utilized the SAUBR membership to promote the biomass education and training materials of the SFRP and Wood to Energy programs.

*Forest Encyclopedia Network (FEN) Advisory Board* The SREF is co-chair of the FEN advisory board along with a representative of the USDA Forest Service Southern Research Station. This board provides oversight and guidance to this unique network of online encyclopedias. The board provides input into direction, marketing, promotion, and evaluation of the effectiveness of this multi-million dollar effort. The SREF works closely with the USDA Forest Service and other partners to improve upon this online resource.

*Master Tree Farmer (MTF) Steering Committee* The SREF is co-chair of this regional program designed to provide forestry and natural resources information to landowners via satellite and internet-based distance education. The Steering Committee provides oversight on program format, promotion, topics and funding

among other duties. This group meets regularly via conference call to plan future events.

*Southern Forestry Technology Transfer and Science Application Advisory Council* The SREF is a member and co-signer of a Charter designed to bring the USDA Forest Service and the Extension Service closer together on technology transfer and science application. This group meets twice per year with the purpose of developing and implementing strategies to deliver science more effectively to various audiences.

*Forest Landowners Association Magazine Editorial Board* As a member of this committee the SREF provides input into the bimonthly magazine and suggests several topics and Extension authors for various articles. In addition, the SREF negotiated and has been paying for a substantially reduced annual subscription (\$6 per subscription vs. \$40) for the Forest Landowner magazine to Extension natural resource specialists and forestry deans in the region. Several state Extension specialists have authored or co-authored articles for this magazine that reaches close to 10,000 subscribers.

*Southern Forestry GIS (SoForGis) Conference Planning Team* The SREF provides assistance to this committee/effort by providing services of the SREF IT Team (via website production). The SREF also provides marketing/promotion and various other types of support for the conference including assisting with production of proceedings CDs.

*Visualizing Future Landscapes Project* As a Co-Principal investigator for this project, the SREF provided input into Extension deliverables. This project is an RREA focus funds project designed to develop materials for use by county and state Extension professionals in the area of visualizing the impact of land use change. SREF IT staff assisted with the development of an online shortcourse on Visualizing Future

Landscapes ([http://www.warnell.uga.edu/online\\_courses/fragmentation/](http://www.warnell.uga.edu/online_courses/fragmentation/)).

***Biomass Incentives Program Committee*** The SREF is a member of the steering committee providing oversight to a funded project investigating incentives for private landowners pertaining to biomass and bioenergy. This project is lead by several University of Florida Principal Investigators.

***Southern Forest Research Partnership (SFRP)*** The SREF is a member of the SFRP and works closely with their Executive Director to develop joint programs. One example is the biomass training project. In addition, SREF staff made presentations to the SFRP Board of Directors in 2008. SREF staff also maintain the SFRP website.

***USDA Forest Service Urban Forestry National Technology Transfer Team*** The SREF office participated in this national technology transfer team effort in Evanston, IL. Staff will work closely with this team to develop and implement various strategic actions nationally.

***The Association of Natural Resource Extension Professionals (ANREP) Executive Board*** The SREF participate as a board member of ANREP. In addition, the IT staff of SREF provide website oversight and development duties.

***The University of Georgia - Center for Urban Agriculture Advisory Council*** The SREF participates in Center planning activities and is a member of its Advisory Council.

***Carbon Trading Team*** The SREF is part of a team that is charged with developing educational materials and websites on carbon trading.

***Georgia ANREP*** The SREF assists the Georgia Chapter of ANREP with a variety of duties and responsibilities including maintenance of their website and annual conference planning.

***University of Georgia Bioenergy Team*** The SREF is a member of a team that is working across department lines to investigate opportunities for bioenergy in Georgia and the South.

***National 4-H Forestry Invitational Committee*** As a member of the committee, the SREF provides insight into administration and funding issues of the Invitational, and this year, SREF will be revamping the Invitational website.

***American Tree Farm System Education and Outreach Committee*** The SREF participates in this committee and provides assistance in program direction, grant reviews and other relevant activities.

***Restoring America's Longleaf Initiative*** The SREF office has been asked to provide leadership for the education and outreach committee of this new initiative. Over 25 agencies are involved in this regional effort.

***Web-based Learning Center Advisory Committee*** The SREF office is represented on this Committee. SREF staff is involved in various activities of the Center including reviewing grants, assisting with marketing efforts and overall input into Center direction.

***University of Georgia Appeals Committee*** Bill Hubbard was asked to review denied promotions with a committee of Senior Public Service Associates.

## PAPERS, REPORTS & PUBLICATIONS

### ***Peer Reviewed Journal Articles***

Hull, R. B. and S.F. Ashton. (2008). Forest Cooperatives Revisited. *Journal of Forestry* 106(2): 100-105.

Merry, K., Bettinger, P. & W.G. Hubbard (2008). Back to the Future Part I: Results of a Survey of County Planners on the use of Visualization Models and Software.



Journal of Extension. <http://www.joe.org>.

Merry, K., Bettinger, P. & W.G. Hubbard (2008).

Back to the Future Part II: Results of a Survey of County Extension Agents on the use of Visualization Models and Software. *Journal of Extension*.

### *Manuscripts*

Kanzian, C., Holtzleitner, F., Stampfer, K. and

S. Ashton. (Accepted for publication in 2009). Regional energy wood logistics—optimizing local fuel supply. *Silva Fennica* 43(1): 113-128. Other Articles.

### PRESENTATIONS & POSTERS

Hubbard, William & Sarah Ashton (2008).

National Forestry Trends: Implications for Private Forest Landowners. Presentation at 2008 Ag Expo Landowner Forum. January 19th, 2008. West Monroe, LA.

Hubbard, William, Ashton, Sarah & Michael

Blazier. Wood Biofuels. Presentation at 2008 CenLa Forestry Forum. January 29th, 2008. Alexandria, LA.

Hubbard, William & Sarah Ashton (2008).

National Forestry Trends: Implications for Small Private Forest Landowners and Service Providers. Presentation at Business Opportunities for Small Acreage and Suburban Woodlands. February 8, 2008. Charlottesville, VA.

Hubbard, William. (2008). Economic Outlook

for Southern Forests. Presentation at 2008 Ark-La-Tex Forestry Forum. March 13th, 2008, Shreveport, LA.

Hubbard, William (2008). Southern Regional

Extension Forestry Update. Presentation at 2008 Southern NAUFRP Meeting. April 8th, 2008. Chicago, IL.

Hubbard, William (2008). Southern Regional

Extension Forestry Update. Presentation at the 2008 Southern Group of State Foresters Annual Meeting. June 10th, 2008. Columbia, SC. (presented to both Management Chiefs & State Foresters).

Hubbard, William (2008). The Extent and

Impact of Policy on Small-Scale Forest Use and Management in the United States. Presentation at 2008 Small-Scale Rural Forest Use and Management: Global Policies vs. Local Knowledge, An International Symposium. June 23rd, 2008. Gerardmere, France.

Hubbard, William (2008). An Update on

Forestry Issues & Their Potential Impact on Seedling Demand. Presentation at 2008 Southern Forest Nursery Association's Annual Meeting. July 24th, 2008. Asheville, NC.

Hubbard, William (2008). Southern Regional

Extension Forestry Update. A presentation at the Southern Program Leadership Network to the Agriculture and Natural Resource Program Leaders. August 25th, 2008. Greensboro, NC.

Hubbard, William (2008). Southern Regional

Extension Forestry Update. A presentation at the Joint SGSF/SREF Meeting. December 9th, 2008. Athens, GA.

### SHORTCOURSES PRODUCED

Hubbard, W. G., and Irwin, K. Forestry for

Nonforesters Part I. Athens, Georgia. April, 2008.

Hubbard, W. G. and Irwin, K. Forestry for

Nonforesters, Part II, Athens, Georgia. April, 2008.



A young girl with long, wavy red hair is sitting in a green boat on a calm lake. She is holding a large, dark green fish with both hands, looking at it with a smile. The background shows the water reflecting the sky and some greenery on the far shore. A white text box with a decorative border is overlaid on the left side of the image.

### 2009 ROAD AHEAD

The Southern Regional Extension Forestry office plans to continue to provide service to state Extension services and the USDA Forest Service. Several exciting activities are scheduled to allow us the opportunity to accomplish this.

## 2009: THE ROAD AHEAD

The staff of the Southern Regional Extension Forestry office will remain committed to providing quality services to the many audiences and clients it serves in 2009 and beyond. This will involve active engagement with these communities to continue several projects currently underway and strategies for serving them in new capacities into the future. Several ongoing projects have been reviewed in this annual report. They include for example, conducting a regional audience assessment survey; the investigation of programs and products that might be of use to those interested in restoring the shortleaf ecosystem in the East; website maintenance and enhancement; committee activities; speaking engagements and opportunities to visit state land grant universities and a host of other programs and projects.

2009 and 2010 also brings additional opportunities. These include:

- Transitioning the National USDA Forest Service's Timber Tax website and related activities to the SREF office for upkeep, enhancement and management;
- Assisting with the development of the Forest-Based Bioenergy Community of Practice eXtension project;
- Several forest restoration activities including assistance with the America's Longleaf Initiative, and assistance with an Eastern Shortleaf Pine Initiative;
- A formal assessment of the impact of the Master Tree Farmer Program and an investigation of developing a web-based version of the Master Tree

Farmer Program;

- The development of a formal Memorandum of Understanding between the Southern Regional Extension Foresters and the Southern Group of State Foresters. This MOU will include components relating to professional and landowner education and technology transfer, and the objective of these two service organizations working more closely together in the future to meet the needs of numerous audiences;
- The conductance of several forestry and natural resource webinars designed for regional and national audiences that include landowners and professionals. In addition, SREF will investigate the first-ever online forest landowner conference through the webinar system;
- A regional absentee forest landowner initiative via a train-the-trainer approach for forest educators at the state and county level;
- Assistance with the planning and preparation of the 11th North American Agroforestry Conference to be held in Athens, Georgia;
- Invited presentations on a variety of topics including bioenergy and biomass, web-based learning tools, forest industry status, carbon markets for landowners and others;
- Maintenance, upgrade and enhancement of several important forest-based educational websites outlined in this report.